

# MD Accelerated Switching RM54

Potomac Edison

December 12, 2016



## Accelerated Switching: General Information

- For any enrollment or drop received, day **one** will be the day that we get the EDI into our billing system (Should be same day unless received in evening).
- Enrollments and Drops will be processed using the same rules.
- Each switch will be performed within 3 business days
- EDI processed as received. We will not hold the EDI until a point in the future.
  - EDI's will be processed using a “last in” approach.
    - We will evaluate using the DTM129 field.
- There will be no limit on the number of switches performed in each billing period.
- A supplier can take ownership of a customer on a Saturday if the previous supplier move out occurred on a Friday.

## Accelerated Switching: General Information Continued

- Each supplier will receive the customer's peak demand for the billing period regardless of when the supplier served the customer.
- Bill Option (REFBLT) change transaction processing will not change from current practices. The effective date is still tied to the meter read date. The bill option change will continue to take effect with the next bill.
- Billing/Invoicing will occur with normal scheduled EDC Billing
- Customer will receive ONE bill for the period.
  - Full month of EDC consumption/charges.
  - Bill will show multiple EGS consumption/charges
  - EDI 867 and EDI 810 will be sent at end of billing period
- 820 will be sent on the 5<sup>th</sup> day from the bill's due date.

## Accelerated Switching Rules:

*Next Day enrollment unless multiple activity. Enrollments are next day in all instances except when we have consecutive activity that takes place on the account within a day or two of an enrollment. (Move-Out reflects final day with current supplier.....Move-In reflects first day of new supplier.)*

### Examples:

Mon	Tues	Wed	Thurs	Fri	Sat
Supplier A	-	-	-		
Move-Out	Move In				

**Scenario #1.** If we have no additional activity prior to supplier becoming active, perform a next day switch.

Mon	Tues	Wed	Thurs	Fri	Sat
Supplier A	-	-	-		
Move Out	Move In				
	Supplier B				
		Move Out	Move In		

**Scenario #3.** If we receive a switch request the day of a supplier move in, perform a 2 day switch for the new supplier.

Mon	Tues	Wed	Thurs	Fri	Sat
Supplier A	-	-	-		
Move Out	Move In				
Supplier B					
Move Out	Move In				

**Scenario #2.** If we receive another EDI on the same day as an enrollment taking place, we will use last in rules to determine which supplier receives that customer.

Mon	Tues	Wed	Thurs	Fri	Sat
Supplier A	-	-	-		
Move Out	Move In				
	Supplier B				
	-	Move Out	Move In		
		Supplier C			
		Move Out	Move In		

**Scenario #4.** If we receive a switch request on the day of a supplier move out, rescind previous supplier and perform a next day switch.

# Switching Examples

## Enrollment for a shopping customer

### Example 1: is a 12/01/2016 – 12/31/2016 Bill Period

Enrollment received on 12/19/2016  
 Supplier A finals on 12/19/2016  
 Supplier B starts on 12/20/2016

### Example 2: is a 12/01/2016 – 12/31/2016 Bill Period \*Switch on Saturday

Enrollment received on 12/23/2016  
 Supplier A finals on 12/23/2016  
 Supplier B starts on 12/24/2016

### Example 3: is a 12/01/2016 – 12/31/2016 Bill Period \*Two consecutive day switches

Enrollment received on 12/19/2016  
 Supplier A finals on 12/19/2016  
 Supplier B starts on 12/20/2016

Enrollment received on 12/20/2016  
 Supplier B finals on 12/21/2016  
 Supplier C starts on 12/22/2016

### Example 4: is a 12/01/2016 – 12/31/2016 Bill Period \*Three consecutive day switches

Enrollment received on 12/19/2016  
 Supplier A finals on 12/19/2016  
 Supplier B starts on 12/20/2016

Enrollment received on 12/20/2016  
 Supplier B finals on 12/21/2016  
 Supplier C starts on 12/22/2016

Enrollment received on 12/21/2016 the contract date is later than Supplier C  
 Supplier C is rescinded  
 Supplier D starts on 12/22/2016

DECEMBER 2016						
SUN	MON	TUE	WED	THU	FRI	SAT
				1	2	3
4	5	6	7	8	9	10
11	12	13	14	15	16	17
18	19	20	21	22	23	24
25	26	27	28	29	30	31

## Accelerated Switching Details: Bill Window

- If EDI is received greater than 2 days **prior** to scheduled meter read date (MRD), follow Outside Bill Window Rules, as outlined on prior slide
- If EDI is received either (1) the day prior to scheduled MRD, or (2) on day of scheduled MRD, switch customer **on cycle**
- If EDI is received **one day** after scheduled meter read, determine the following:
  - Has the customer been billed?
    - If **YES**, complete 2 day switch
    - If **NO**, perform 3 day switch
- IF EDI is received greater than 2 days **after** scheduled MRD, follow Outside Bill Window Rules, as outlined on prior slide

Note: Meter read schedule can be found on the FE Website. Customer specific meter read schedules can be found on the eligible customer list under “meter read cycle” and also can be found on the 867 IU/HU under “bill cycle”.

## Cutover Details:

- Accelerated switch cutover will begin on Friday evening, 12/16/16.
- Any enrollment/drop requests that are received and processed during normal business hours on Friday 12/16/16 will have the current switching rules applied.
- Any EDI or other enrollment/drop requests received after end of processing on Friday 12/16/16 will have the new switching rules applied.

Therefore, anything received from the point the system is down on Friday through the weekend, will be processed on Monday using the new rules.

# Bill Print Changes

Charges From Potomac Edison			
Customer Number:	[REDACTED]		
Rate:	Residential Service PE-RSRF(Aug 26, 2016 to Aug 29, 2016)		
Generation Charge			12.52
Transmission Charge			0.82
Customer Distribution Charge			0.67
Distribution Charge			3.52
Electric Universal Service Fee			0.05
Energy Cost Adjustment			0.74
Administrative Credit			-0.40
Cogeneration PURPA Surcharge			2.80
Franchise Tax			0.13
EmPower MD Surcharge			1.24
MD Environmental Surcharge			0.03
<b>Current Consumption Bill Charges</b>			<b>22.12</b>
Customer Number:	[REDACTED]		
Rate:	Residential Service PE-RSRD(Aug 30, 2016 to Sep 26, 2016)		
Customer Distribution Charge			5.00
Distribution Charge			24.62
Electric Universal Service Fee			0.36
Administrative Credit			-2.77
Cogeneration PURPA Surcharge			19.60
Franchise Tax			0.90
EmPower MD Surcharge			8.66
MD Environmental Surcharge			0.22
<b>Current Consumption Bill Charges</b>			<b>56.59</b>
<b>Total Charges</b>			<b>\$ 78.71</b>
Charges From [REDACTED]			
Account Number:	SJSJSJSJS	Rate:	GEN-F1109
<b>Billing Period:</b>	<b>Aug 30, 2016 to Sep 12, 2016</b>		
Basic Charge	728 KWH x	0.110907	80.74
<b>Total</b>	<b>Charges</b>		<b>80.74</b>
Charges From [REDACTED]			
Account Number:	SJSJSJSJS	Rate:	GEN-F521
<b>Billing Period:</b>	<b>Sep 13, 2016 to Sep 21, 2016</b>		
Basic Charge	468 KWH x	0.052094	24.38
<b>Total</b>	<b>Charges</b>		<b>24.38</b>
Charges From [REDACTED]			
Account Number:	SJSJSJSJS	Rate:	GEN-F1009
<b>Billing Period:</b>	<b>Sep 22, 2016 to Sep 26, 2016</b>		
Basic Charge	260 KWH x	0.100885	26.23
<b>Total</b>	<b>Charges</b>		<b>26.23</b>

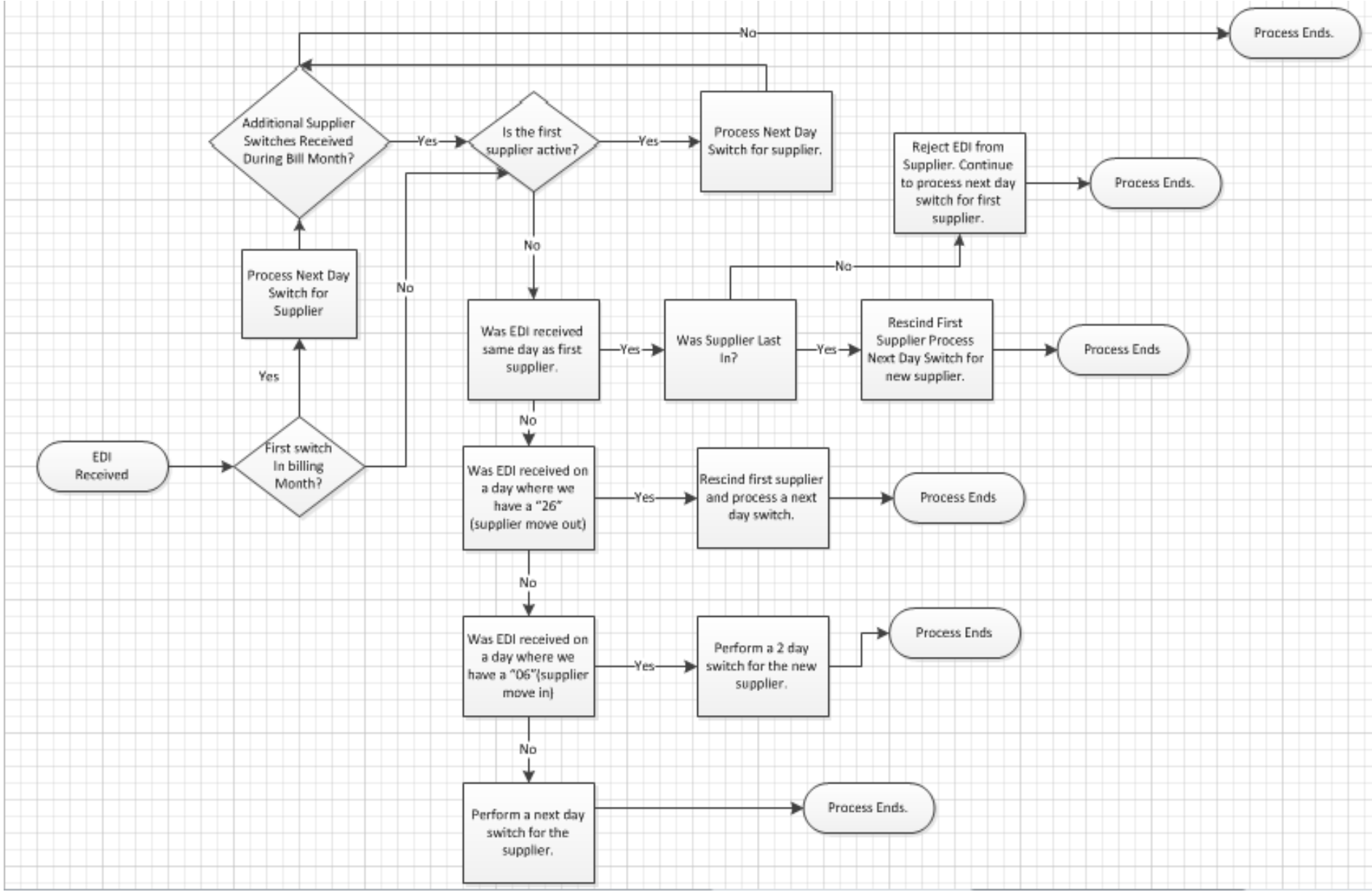
Note: If the customer had 4 suppliers in the bill period they would see 4 supplier boxes.



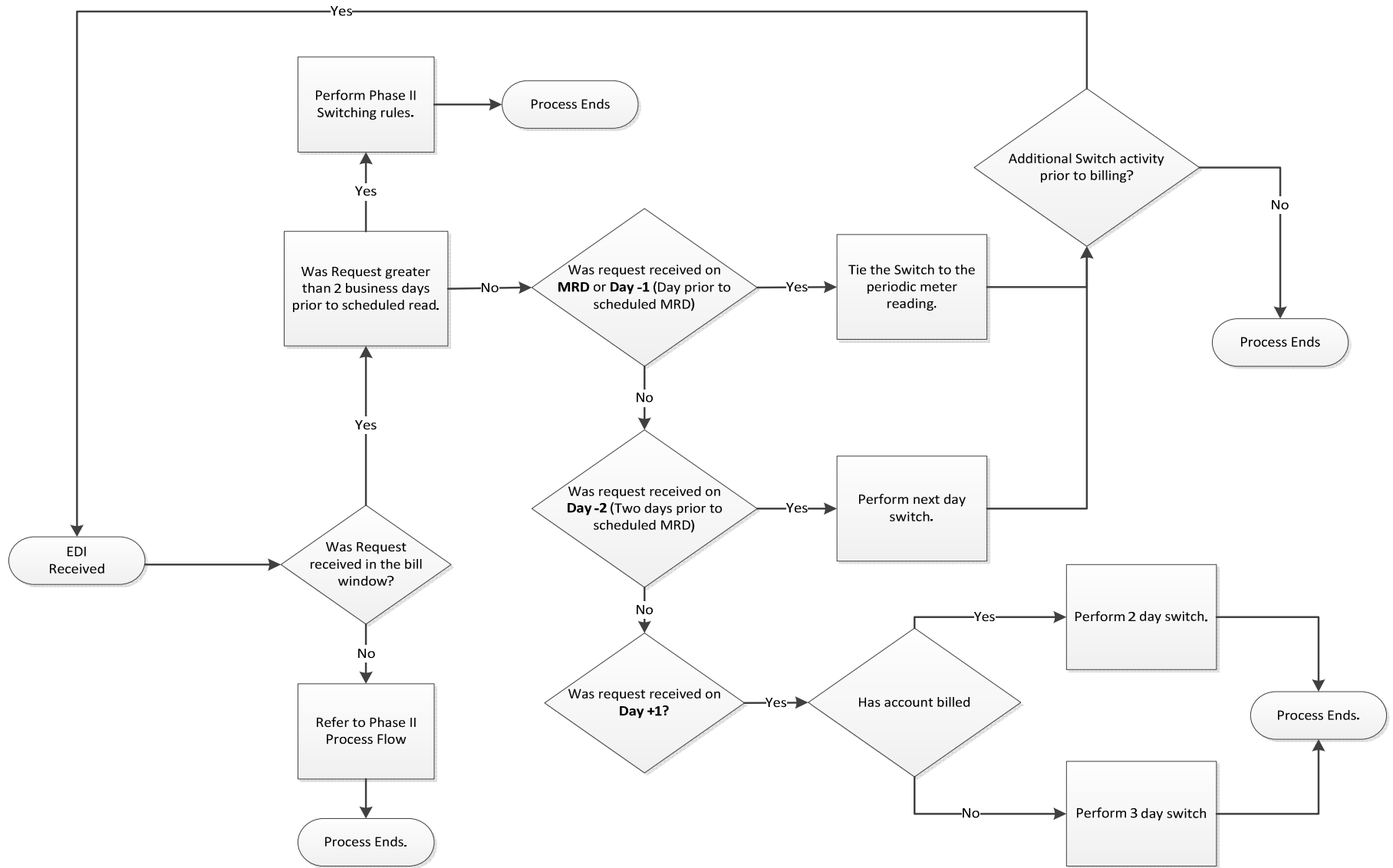
# Appendix

## **Accelerated Switching: Details**

# Accelerated Switching Rules



## Accelerated Switch Bill Window Rules



## Questions

- **If a supplier wants to send enrollments under the current switching rules, what is the cutoff time on 12-16-2016 to send the enrollments?**
  - Potomac Edison would need to have received and processed the EDI into our billing system by 5:00 PM on 12-16-2016 to utilize the current switching rules.
  
- **Will the presentation be available on the FirstEnergy website?**
  - Yes, please use the following link to also access this document on our website:
  - <https://www.firstenergycorp.com/supplierservices/md.html>