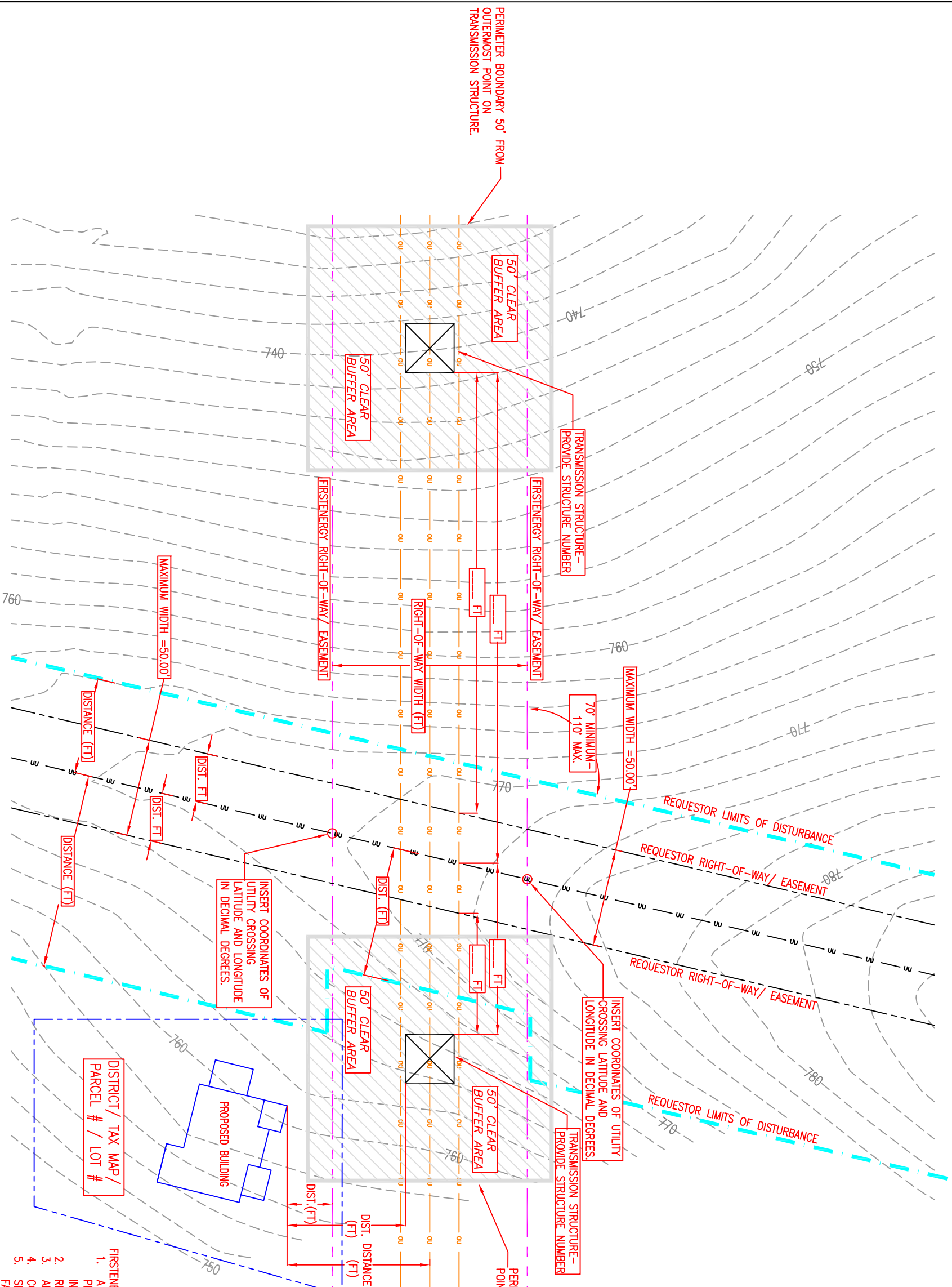


# LEGEND

	STREAM
	LIMITS OF CONSTRUCTION
	TREE LINE
	RIGHT-OF-WAY/PROPERTY LINES
	UNDERGROUND UTILITY
	OVERHEAD UTILITIES
	FENCE LINE
	WATER LINE
	SANITARY SEWER
	STORM SEWER
	GAS LINE
	EXISTING CONTOURS
	PROPOSED CONTOURS
	PROPERTY PARCEL
	BUFFER AREA BOUNDARY



- FIRSTENERGY NOTES:**
1. A LEGAL CONSENT DOCUMENT WILL BE UTILIZED. DRAWING MUST BE EXHIBIT QUALITY WITH ALL PERTINENT INFORMATION. DRAWINGS MUST HAVE A TITLE BLOCK, SCALE, DATE, COMPANY AND CONTACT INFORMATION, NORTH ARROW, PROPERTY OWNER INFORMATION, LOCATION/ADDRESS, ETC.....
  2. RIGHTS-OF-WAYS/ EASEMENTS/ LIMITS OF DISTURBANCE CANNOT INCLUDE TRANSMISSION STRUCTURES. ALL DIMENSIONS ARE TO BE IN FEET!
  3. COORDINATES/ ANGLES ARE TO BE IN DECIMAL DEGREES.
  4. SEE THE WEBSITE FOR GUIDELINES FOR WORKING IN THE AREA OF HIGH VOLTAGE ELECTRICAL FACILITIES:
  5. <https://www.firstenergycorp.com/help/safety/red-estate-power-lines/transmission-right-of-way.html>
  6. PERMANENT EASEMENTS/ RIGHTS-OF-WAYS ARE TO HAVE A MINIMUM BUFFER AREA OF 50 FEET FROM GUY'S, GUY WIRES, ANCHORS, AND OTHER RELATED TRANSMISSION, SUBTRANSMISSION AND DISTRIBUTION FACILITIES MUST ALSO HAVE A BUFFER ZONE APPROVED BY FIRSTENERGY.

DEVELOPER/COMPANY NAME  
 ADDRESS  
 CITY, COUNTY, STATE  
 CONTACT INFORMATION

PROJECT NAME  
 LOCATION  
 CITY, COUNTY, STATE

SITE PLAN/  
 GRADING PLAN/  
 UTILITY PLAN

SCALE: 1" = \_\_\_\_\_'

DATE: \_\_\_\_/\_\_\_\_/\_\_\_\_

PROJECT NO.:  
 01  
 DRAWN BY:  
 APPROVED BY:  
 DRAWING NO.: