

# DETAILED USAGE INFORMATION

## Fact Sheet

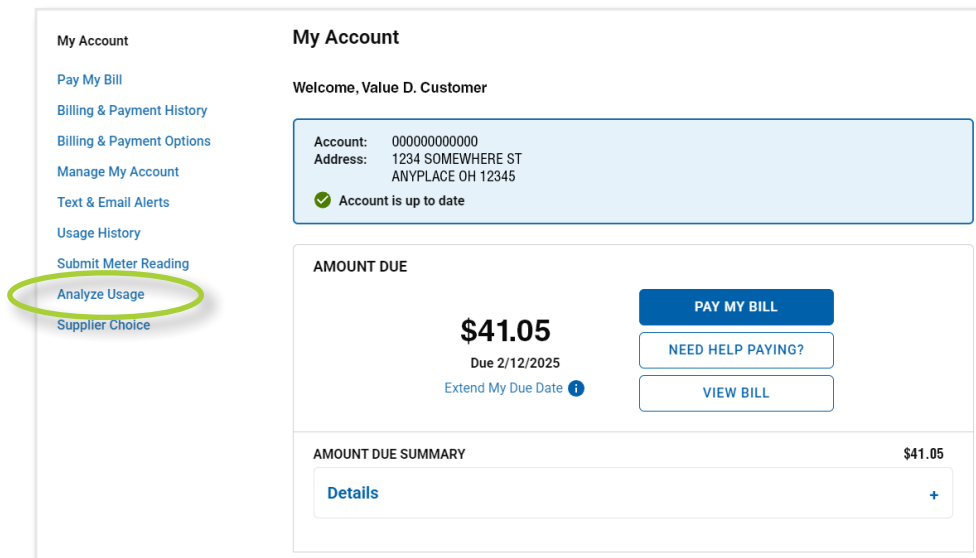
FirstEnergy's Ohio electric companies – Ohio Edison, Toledo Edison and The Illuminating Company – are continuing to install smart meters as part of an ongoing investment, [approved by the Public Utilities Commission of Ohio](#), to modernize the electric distribution system. This step toward a more modernized electric system will enable automated meter readings and may enhance our ability to respond to outages faster and more efficiently.

With a smart meter, you will have access to more detailed energy information through our online Home Energy Analyzer tool that will help you better understand your electricity use – which means you can then make informed decisions on how to manage and control your electricity consumption.

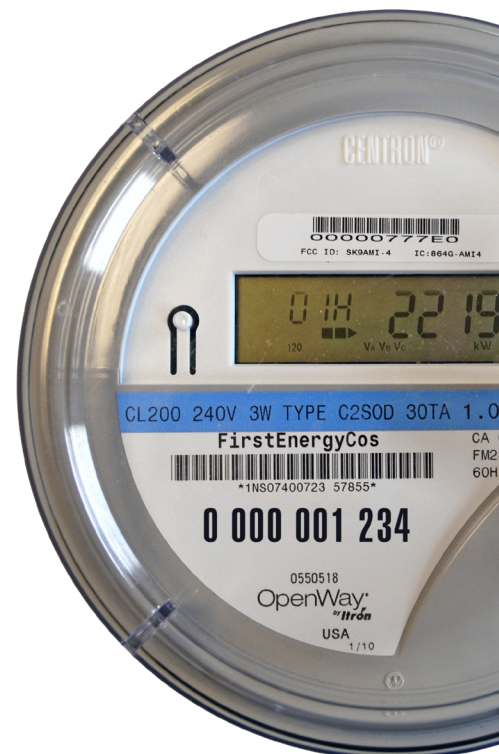
### Q | Where can I access my detailed energy usage information?

A | Go to [firstenergycorp.com](http://firstenergycorp.com) ▶ **My Account** ▶ click on **Analyze Usage** to access detailed energy usage information provided by your smart meter.

Be assured that the smart meter technology being implemented has been rigorously tested and demonstrated by manufacturers to be accurate, safe and secure in systems throughout the country.



The screenshot shows the 'My Account' page. On the left sidebar, the 'Analyze Usage' link is circled in green. The main content area displays account information, a welcome message, and a bill summary showing an amount due of \$41.05 due on 2/12/2025. There are buttons for 'PAY MY BILL', 'NEED HELP PAYING?', and 'VIEW BILL'. At the bottom, there is an 'AMOUNT DUE SUMMARY' section with a 'Details' link.



**Q | What type of information about my usage is available?**

**A |** The **Bill Comparison** tab displays your usage variances by bill cycle. The **This Bill** and **Previous Bill** buttons allow you to compare billing periods.

**Energy Cost** shows your energy consumption costs at the bill level, **Energy Use** displays a snapshot of your energy consumption over a year, month and day view.

Customers can also use the **Green Button Download** feature on the Bill Comparison tab to download and export billing or interval data.

