

**Gary A. Jack**  
Senior Corporate Counsel

Telephone: 304.534.7409  
Fax: 330.315.9939

April 19, 2024

**VIA ELECTRONIC FILING**

Ms. Karen Buckley  
Executive Secretary  
Public Service Commission of West Virginia  
201 Brooks Street  
PO Box 812  
Charleston, West Virginia 25323

**Re: Substation Equipment Replacement Project  
TMP-\_\_\_\_\_**

Dear Ms. Buckley:

This is a notification of replacement of substation equipment at various substations (listed below). Per Commission Order dated January 18, 2023, in General Order No 265, this notification should not be docketed as a formal case.

Attached is an 8 ½" x 11" color topographic map depicting the area of the proposed Monongahela Power Company Substation Equipment Replacement Projects ("Project") and incorporated herein as **Attachment 1 through Attachment 7**. There are three (3) Project locations with very similar replacement work of protective equipment, which are located at the following Monongahela Power Company Substations.

- The Edgelawn Substation which is located approximately 3 miles southeast of the city of Parkersburg, in Wood County, West Virginia, T
- The Goff Run Substation which is located approximately 2 miles southeast of the city of Spencer, in Roane County, West Virginia.
- The Albright Substation which is located approximately 3 miles northeast of the city of Kingwood, in Preston County, West Virginia.
- The Kingwood Substation which is located approximately 1 mile northwest of the city of Kingwood, in Preston County, West Virginia.

- The Pruntytown Substation, which is located approximately 1.5 miles northeast of the community of Pruntytown, in Taylor County, West Virginia.
- The Wylie Ridge Substation which is located approximately 2.7 miles northeast of the city of Weirton, in Hancock County, West Virginia.
- The Weirton Substation, which is located approximately 1 mile southeast of the city of Weirton, in Hancock County, West Virginia.

Monongahela Power has determined that certain transmission substation protection schemes, particularly electromechanical relays and communication equipment, have become obsolete and are experiencing mis-operations and failures. For example, jaws of the switches are heavily worn, and need replaced along with cracked wooden actuator handles that create reliability and safety concerns. The carrier sets and associated wave traps are past their useful life and are prone to catastrophic failure. These components also suffer from a lack of original equipment manufacturer parts due to their age. The electromechanical relays are 40+ years old with various obsolete parts such as coils, discs, springs, and plungers that are known to have mis-operated in the past. The replacements will greatly reduce relay mis-operations, reduce the number of transmission system elements removed from service during a fault, and increase the availability of transmission system elements.

PJM, in its capacity as the regional Transmission Planner, Planning Coordinator, Transmission Operator, Balancing Authority and Reliability Coordinator, along with FE operations has coordinated outage requirements as part of the reliability planning, economic planning, and interconnection planning processes to preserve the reliability of the electricity grid that is under its operational control as the Regional Transmission Organization (“RTO”). Due to the proposed work at the various substations several existing transmission line ratings will increase. **Table 1** shows the various affected transmission lines and their respective rating changes. Because of this rating increase, the project needs were presented to PJM on November 17, 2023, and the proposed solutions were presented at the December 15, 2023, Sub-regional RTEP Committee Western meeting. The Project PJM supplemental IDs are listed in **Table 2**. The approximate costs of the Projects are also listed in **Table 2** and will be paid by Monongahela Power Company.

**Table 1**

<b>Transmission Line</b>	<b>Existing Rating (amps) (Summer Normal/ Summer Emergency)</b>	<b>Increased Rating (amps) (Summer Normal/ Summer Emergency)</b>
Edgelawn-Goff Run 138 kV	195/209	221/268
Albright-Kingwood 138 kV	187/209	221/268

Weirton Junction-Weirton 138kV and Weirton Junction – Wylie Ridge 138 kV	292/314	308/376
--	---------	---------

**Table 2**

<b>Project Names</b>	<b>PJM Supplemental IDs</b>	<b>Approximate Costs</b>
Edgelawn-Goff Run	s3159.1	\$2,214,758
Albright-Kingwood- Pruntytown	s3160.1	\$4,037,804
Weirton-Wylie Ridge-South Toronto	s3158.1	\$1,848,550

Construction of the Project is expected to commence on or about April 30, 2024, and be complete on or about November 1, 2024.

If you have any questions pertaining to this matter, please do not hesitate to contact me.

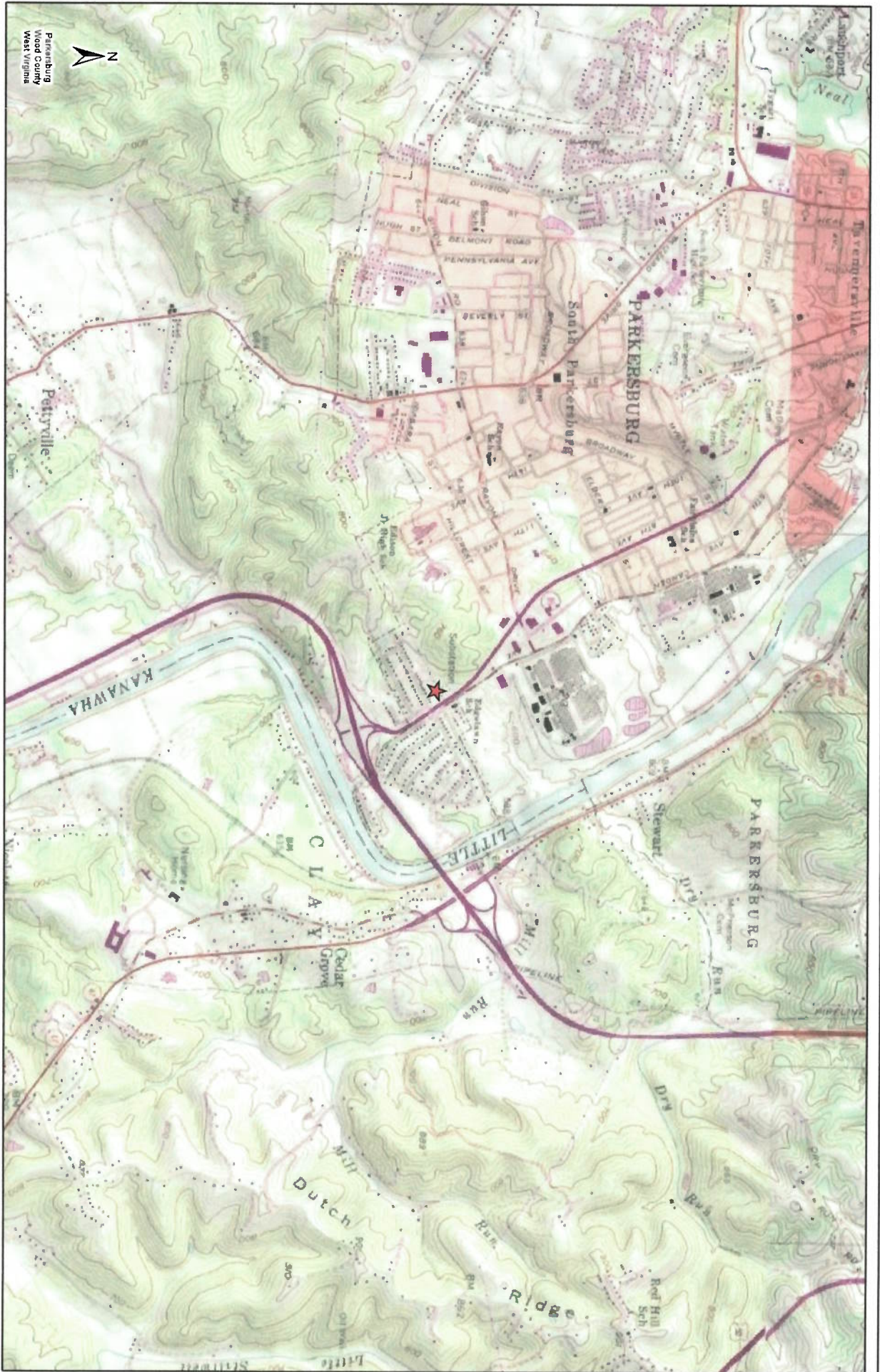
Very truly yours,



Gary A. Jack  
Sr. Corp. Counsel  
5001 NASA Blvd.  
Fairmont, WV 26554

Enclosures





Parkersburg  
Wood County  
West Virginia



**LEGEND:**  
★ Edgelawn Substation



**Reference:**  
USGS Topographical Overlay

**Coordinate System:**  
NAD 1983 StatePlane West Virginia N FIPS 4701 Feet  
Projection: Lambert Conformal Conic; Units: Foot US

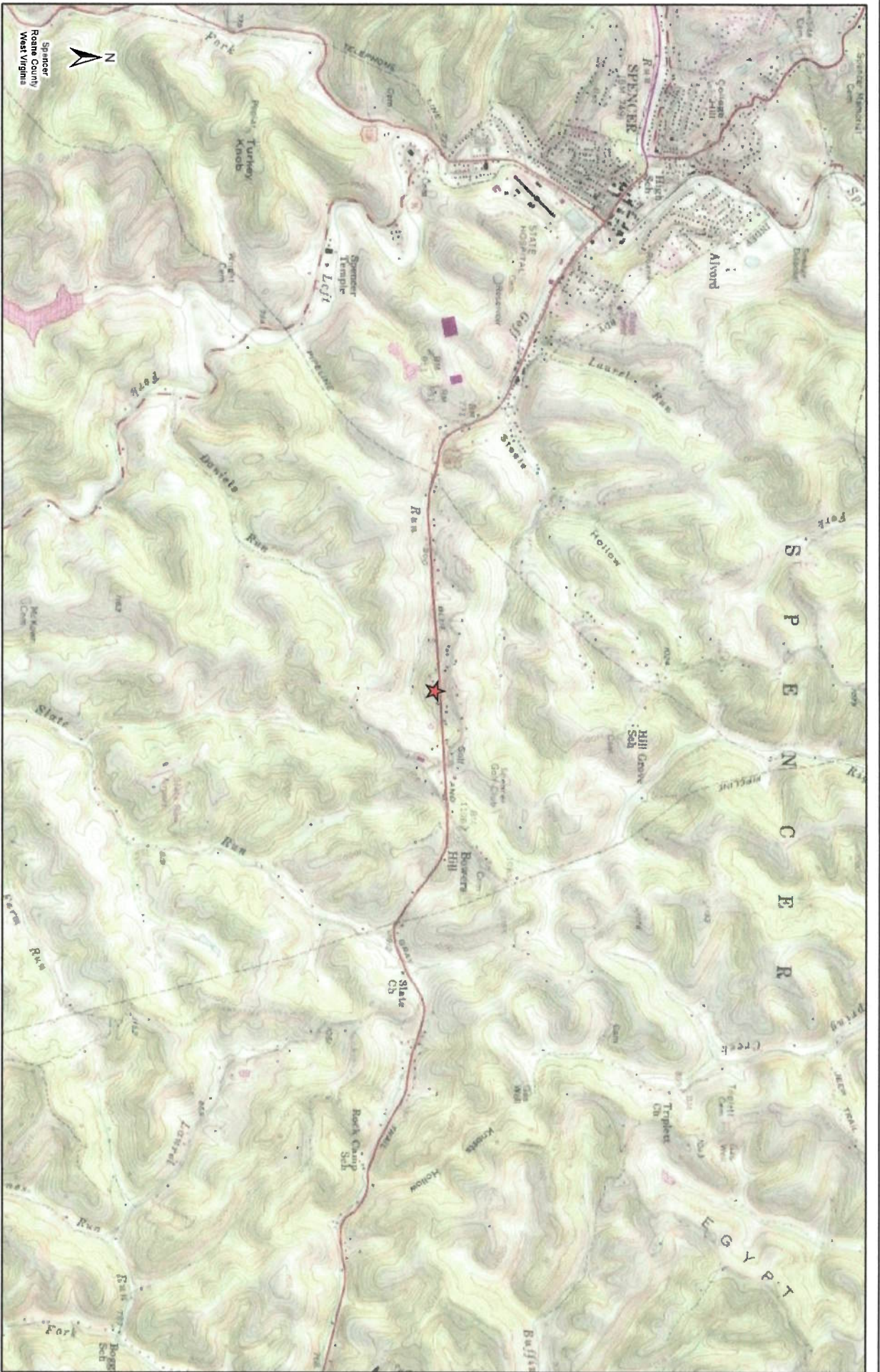


**Attachment 1**

**Edgelawn-Goff Run  
Substation Equipment Upgrade Project**







Spencer  
Roane County  
West Virginia

LEGEND:

★ Goff Run Substation



Reference:  
USGS Topographical Overlay

Coordinate System:  
NAD 1983 StatePlane West Virginia N FIPS 4701 Feet  
Projection: Lambert Conformal Conic Units: Foot US

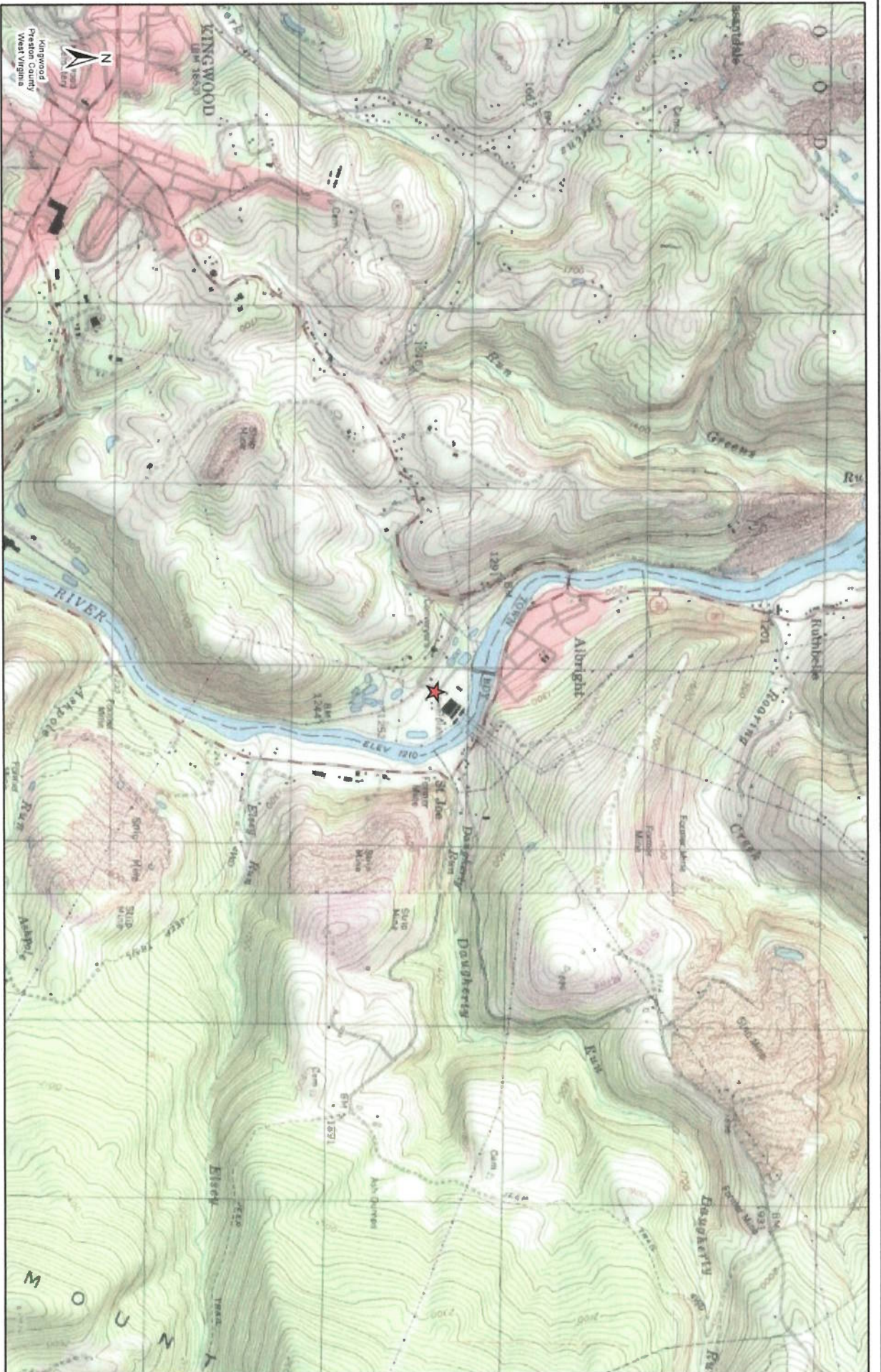


Attachment 2

**MonPower**  
A FirstEnergy Company

Edgewlawn-Goff Run  
Substation Equipment Upgrade Project





**LEGEND:**  
 ★ Albright Substation



**Reference:**  
 USGS Topographical Overlay

**Coordinate System:**  
 NAD 1983 Stateplane West Virginia N FIPS 4701 Feet  
 Projection: Lambert Conformal Conic Units: Foot US

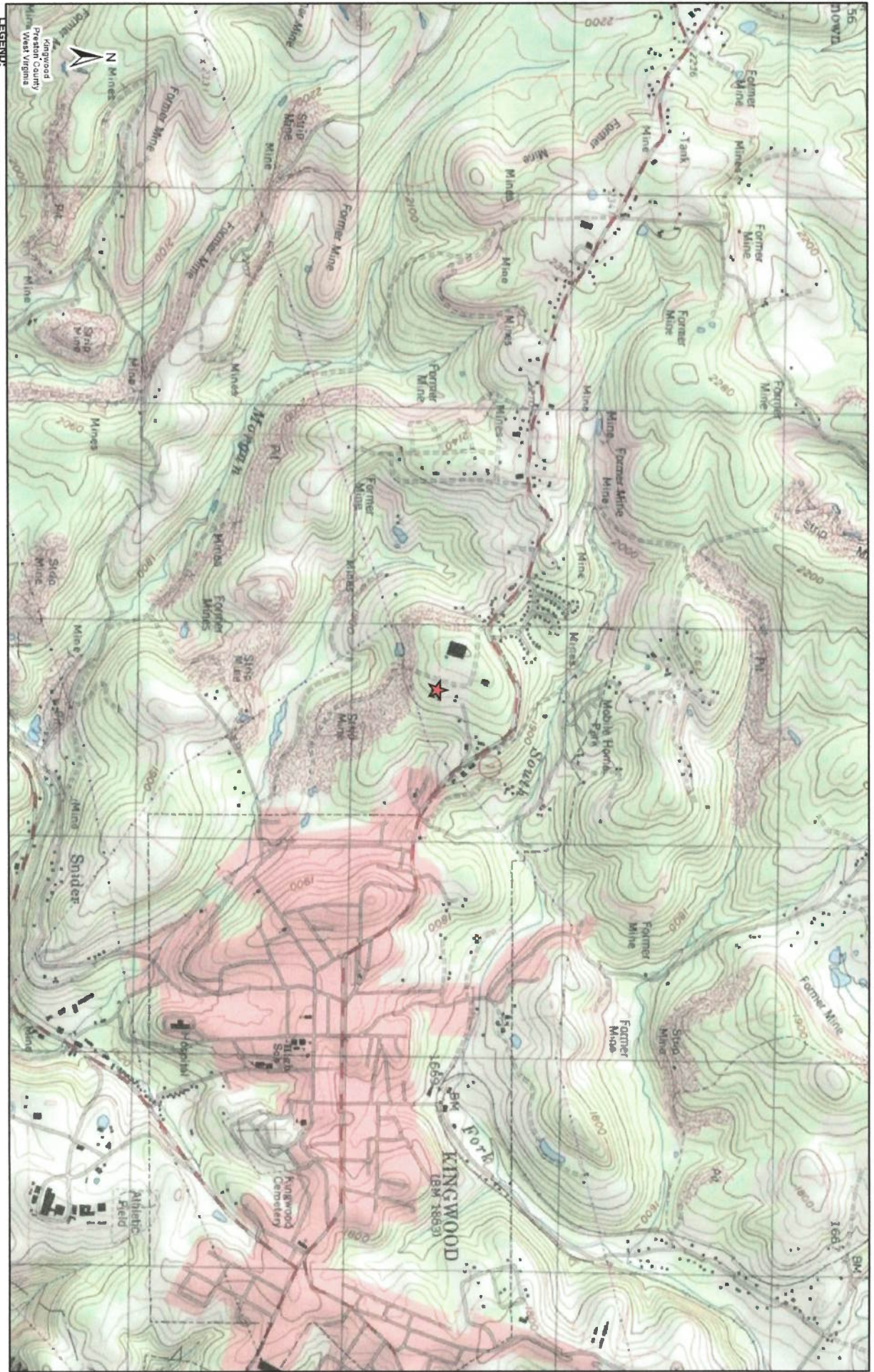



**Attachment X 3**



**Albright-Kingwood-Pruntytown  
 Substation Equipment Replacement Project**





**Symbol**  
 Kingwood Substation



**Reference:**  
 USGS Topographical Overlay

**Coordinate System:**  
 NAD 1983 StatePlane West Virginia N FIPS 4701 Feet  
 Projection: Lambert Conformal Conic; Units: Foot US



**Attachment** 

**MonPower**  
 A FirstEnergy Company

**Albright-Kingwood-Pruntytown  
 Substation Equipment Replacement Project**





Grafton  
Taylor County  
West Virginia

**LEGEND:**  
★ Pruntytown Substation



**Reference:**  
USGS Topographical Overlay

**Coordinate System:**  
NAD 1983 StatePlane West Virginia N FIPS 4701 Feet  
Projection: Lambert Conformal Conic; Units: Foot US



Attachment 35

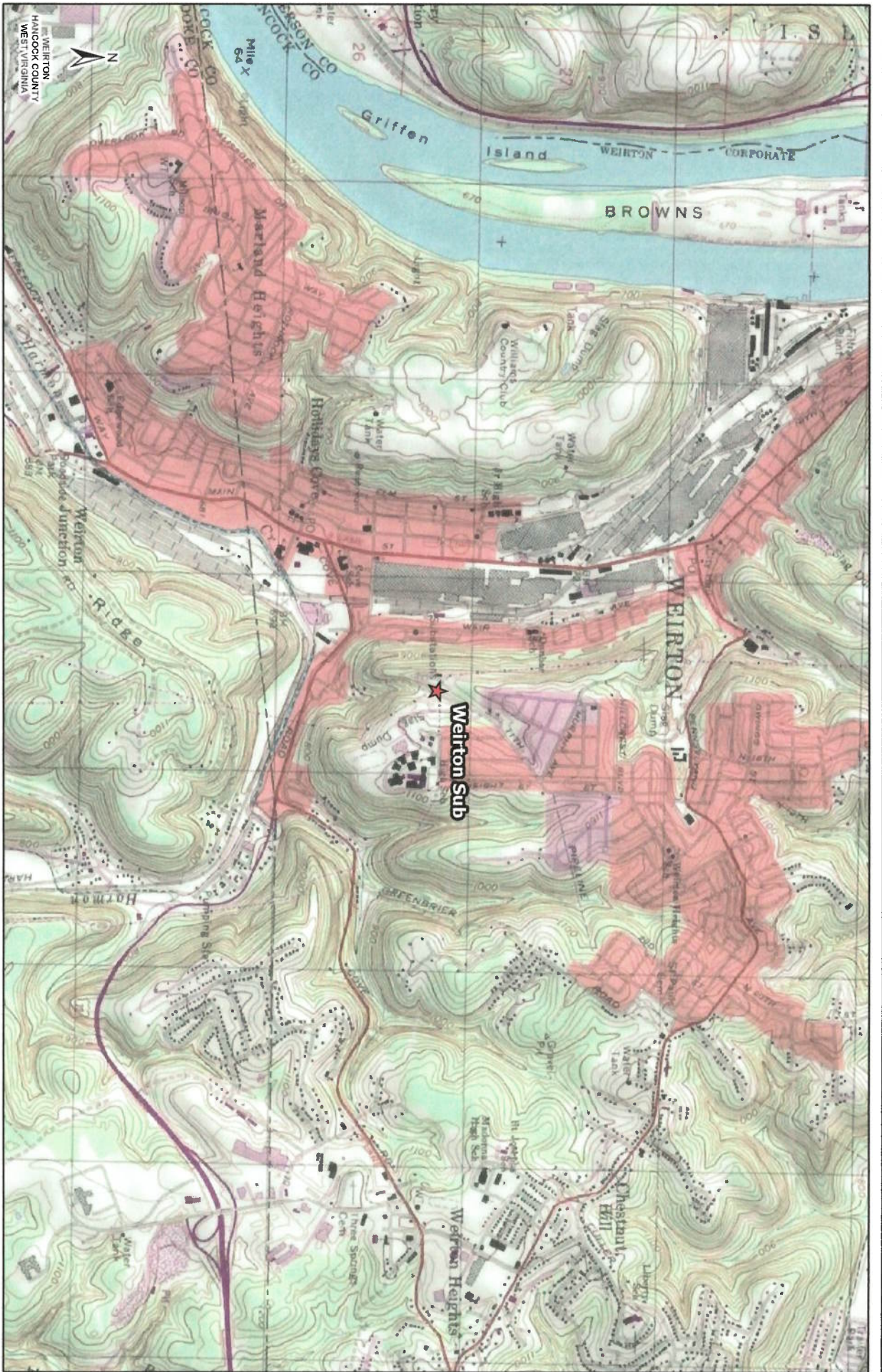



Albright-Kingwood-Pruntytown  
Substation Equipment Replacement Project









**LEGEND:**  
 Weirton Substation



**Reference:**  
 USGS Topographical Overlay

**Coordinate System:**  
 NAD 1983 StatePlane West Virginia N FIPS 4701 East  
 Projection: Lambert Conformal Conic; Units: Foot US



**Attachment 7**

**Weirton - Wylie Ridge  
 Substation Equipment  
 Replacement Project**

