




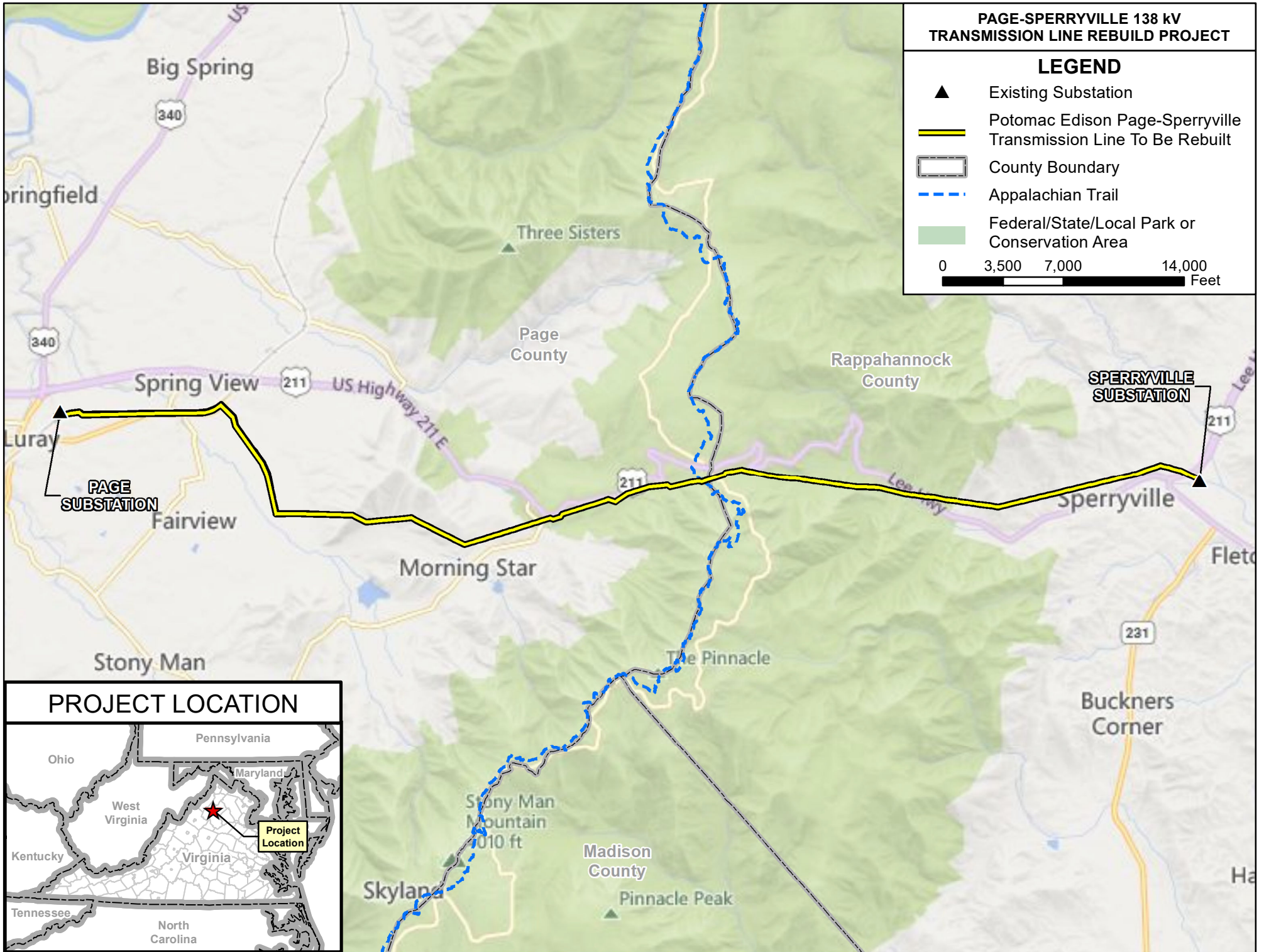


**PAGE-SPERRYVILLE 138 KV
TRANSMISSION LINE REBUILD PROJECT**

LEGEND

-  Existing Substation
-  Potomac Edison Page-Sperryville Transmission Line To Be Rebuilt
-  County Boundary
-  Appalachian Trail
-  Federal/State/Local Park or Conservation Area

0 3,500 7,000 14,000
Feet



PROJECT LOCATION

