



▲ Substation

▭ Township Boundary

▭ Parcel Boundary

Existing Transmission

— < 115 kV

● 230 kV

■ 500 kV

▭ JCP&L ROW

▨ Tree Trimming Rights

— Proposed Route

- - - Proposed Route ROW

▭ Priority Tree Rights Limit

Page 1 of 16

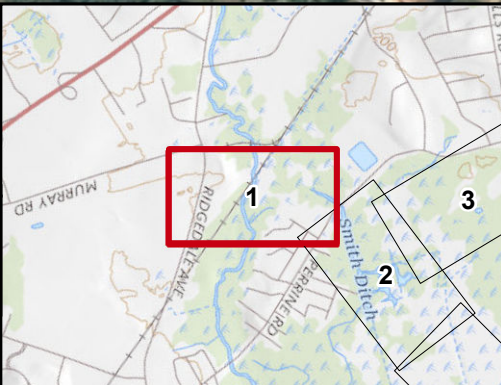
Priority Tree Rights Limit - Important Note
 JCPL'S vegetation management program includes the evaluation and mitigation of Priority Trees located adjacent to the right-of-way. Priority Tree Rights are sought in locations where JCPL uses a targeted and selective approach to evaluate and control trees that are dead, dying, diseased, structurally defective, leaning or significantly encroaching where the operation of the transmission line could be impacted should the tree, or portion of the tree, fail or grow towards it.

As depicted, the Priority Tree Right Limit is a general boundary utilizing a fixed distance of 165 feet from the proposed centerline of the transmission line where evaluation and control of potential Priority Trees may occur. The Priority Tree Right will not encumber areas on which residential homes or commercial buildings are located. Other structures, existing either now or in the future, are permitted within the encumbered area.

Sources:
 Parcels (Morris County, NJ, 2018)
 Imagery (ESRI 2019)

Coordinate System:
 New Jersey State Plane
 NAD 1983

May 7, 2019

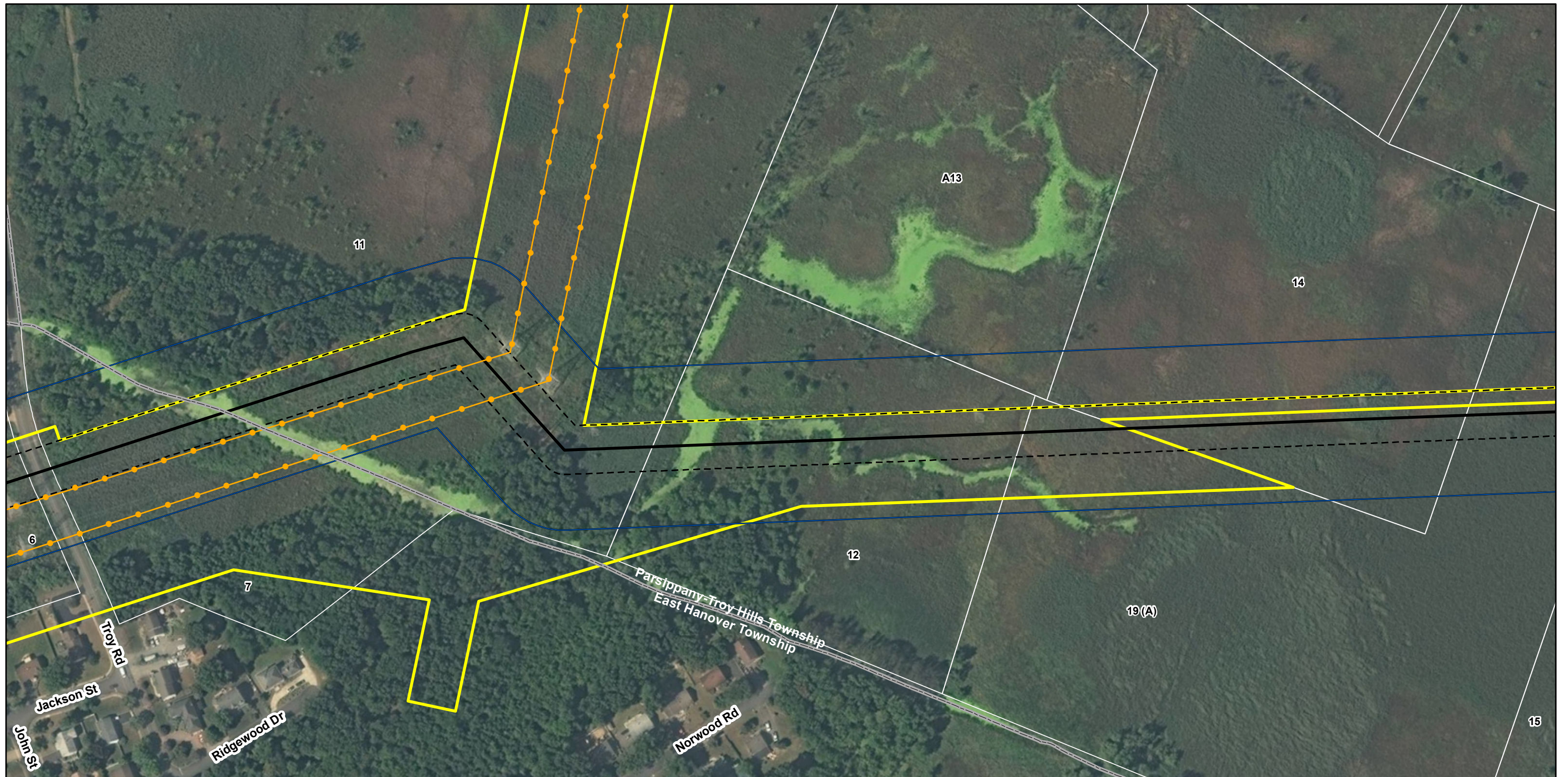


Montville - Whippany 230 kV Reinforcement Project
Constructability

Jersey Central Power & Light
 A FirstEnergy Company

wsp

0 100 200 400 Feet



▲ Substation

▭ Township Boundary

▭ Parcel Boundary

Existing Transmission

— < 115 kV

— 230 kV

— 500 kV

▭ JCP&L ROW

▨ Tree Trimming Rights

— Proposed Route

- - - Proposed Route ROW

▭ Priority Tree Rights Limit

Page 2 of 16

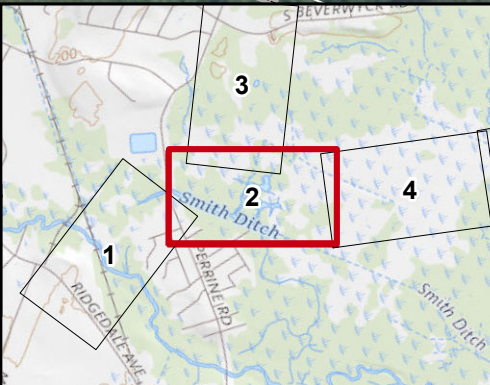
Priority Tree Rights Limit - Important Note
 JCPL'S vegetation management program includes the evaluation and mitigation of Priority Trees located adjacent to the right-of-way. Priority Tree Rights are sought in locations where JCPL uses a targeted and selective approach to evaluate and control trees that are dead, dying, diseased, structurally defective, leaning or significantly encroaching where the operation of the transmission line could be impacted should the tree, or portion of the tree, fail or grow towards it.

As depicted, the Priority Tree Right Limit is a general boundary utilizing a fixed distance of 165 feet from the proposed centerline of the transmission line where evaluation and control of potential Priority Trees may occur. The Priority Tree Right will not encumber areas on which residential homes or commercial buildings are located. Other structures, existing either now or in the future, are permitted within the encumbered area.

Sources:
 Parcels (Morris County, NJ, 2018)
 Imagery (ESRI 2019)

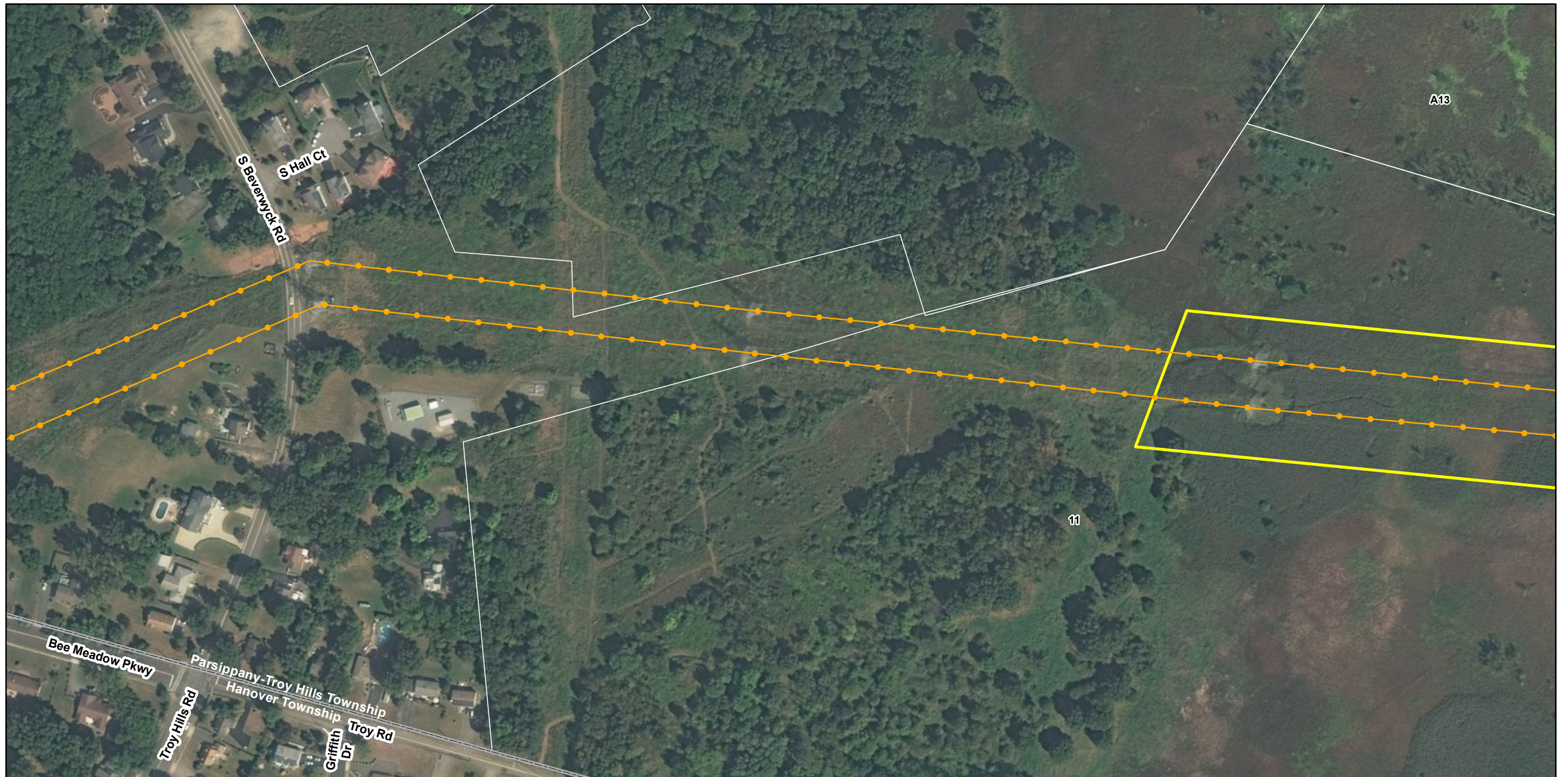
Coordinate System:
 New Jersey State Plane
 NAD 1983

May 7, 2019



Montville - Whippany 230 kV Reinforcement Project
Constructability

A FirstEnergy Company



Page 3 of 16

Priority Tree Rights Limit - Important Note
 JCPL's vegetation management program includes the evaluation and mitigation of Priority Trees located adjacent to the right-of-way. Priority Tree Rights are sought in locations where JCPL uses a targeted and selective approach to evaluate and control trees that are dead, dying, diseased, structurally defective, leaning or significantly encroaching where the operation of the transmission line could be impacted should the tree, or portion of the tree, fail or grow towards it.

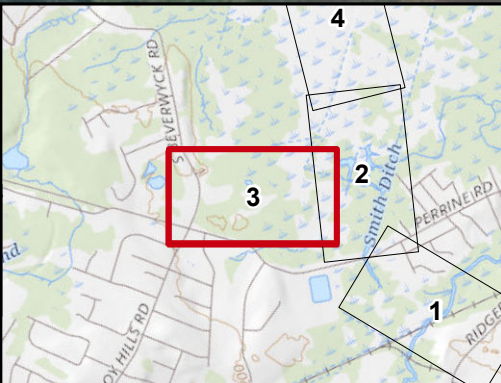
As depicted, the Priority Tree Right Limit is a general boundary utilizing a fixed distance of 165 feet from the proposed centerline of the transmission line where evaluation and control of potential Priority Trees may occur. The Priority Tree Right will not encumber areas on which residential homes or commercial buildings are located. Other structures, existing either now or in the future, are permitted within the encumbered area.

- ▲ Substation
- ▭ Township Boundary
- ▭ Parcel Boundary
- Existing Transmission**
 - < 115 kV
 - 230 kV
 - 500 kV
- ▭ JCP&L ROW
- ▨ Tree Trimming Rights
- Proposed Route
- - - Proposed Route ROW
- ▭ Priority Tree Rights Limit

Sources:
 Parcels (Morris County, NJ, 2018)
 Imagery (ESRI 2019)

Coordinate System:
 New Jersey State Plane
 NAD 1983

May 7, 2019

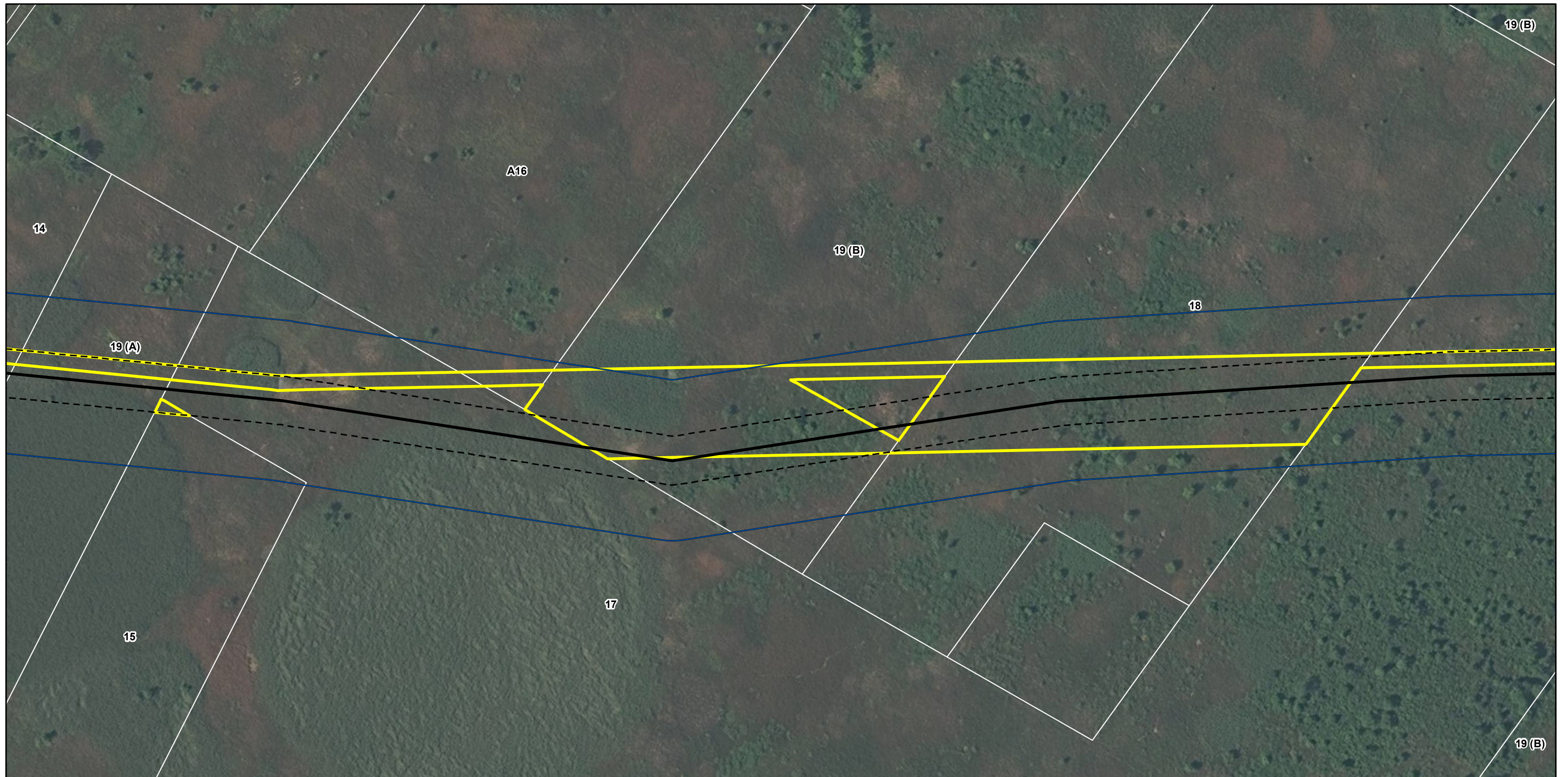


Montville - Whippany 230 kV Reinforcement Project
 Constructability

Jersey Central Power & Light
 A FirstEnergy Company

WSP

0 100 200 400 Feet



Page 4 of 16

Priority Tree Rights Limit - Important Note
 JCPL'S vegetation management program includes the evaluation and mitigation of Priority Trees located adjacent to the right-of-way. Priority Tree Rights are sought in locations where JCPL uses a targeted and selective approach to evaluate and control trees that are dead, dying, diseased, structurally defective, leaning or significantly encroaching where the operation of the transmission line could be impacted should the tree, or portion of the tree, fail or grow towards it.

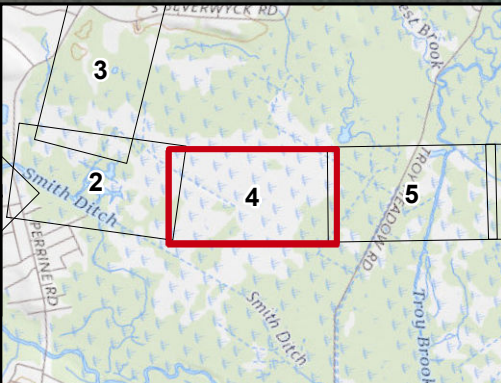
As depicted, the Priority Tree Right Limit is a general boundary utilizing a fixed distance of 165 feet from the proposed centerline of the transmission line where evaluation and control of potential Priority Trees may occur. The Priority Tree Right will not encumber areas on which residential homes or commercial buildings are located. Other structures, existing either now or in the future, are permitted within the encumbered area.

- ▲ Substation
- ▭ Township Boundary
- ▭ Parcel Boundary
- Existing Transmission**
 - < 115 kV
 - 230 kV
 - 500 kV
- ▭ JCP&L ROW
- ▨ Tree Trimming Rights
- Proposed Route
- - - Proposed Route ROW
- ▭ Priority Tree Rights Limit

Sources:
 Parcels (Morris County, NJ, 2018)
 Imagery (ESRI 2019)

Coordinate System:
 New Jersey State Plane
 NAD 1983

May 7, 2019

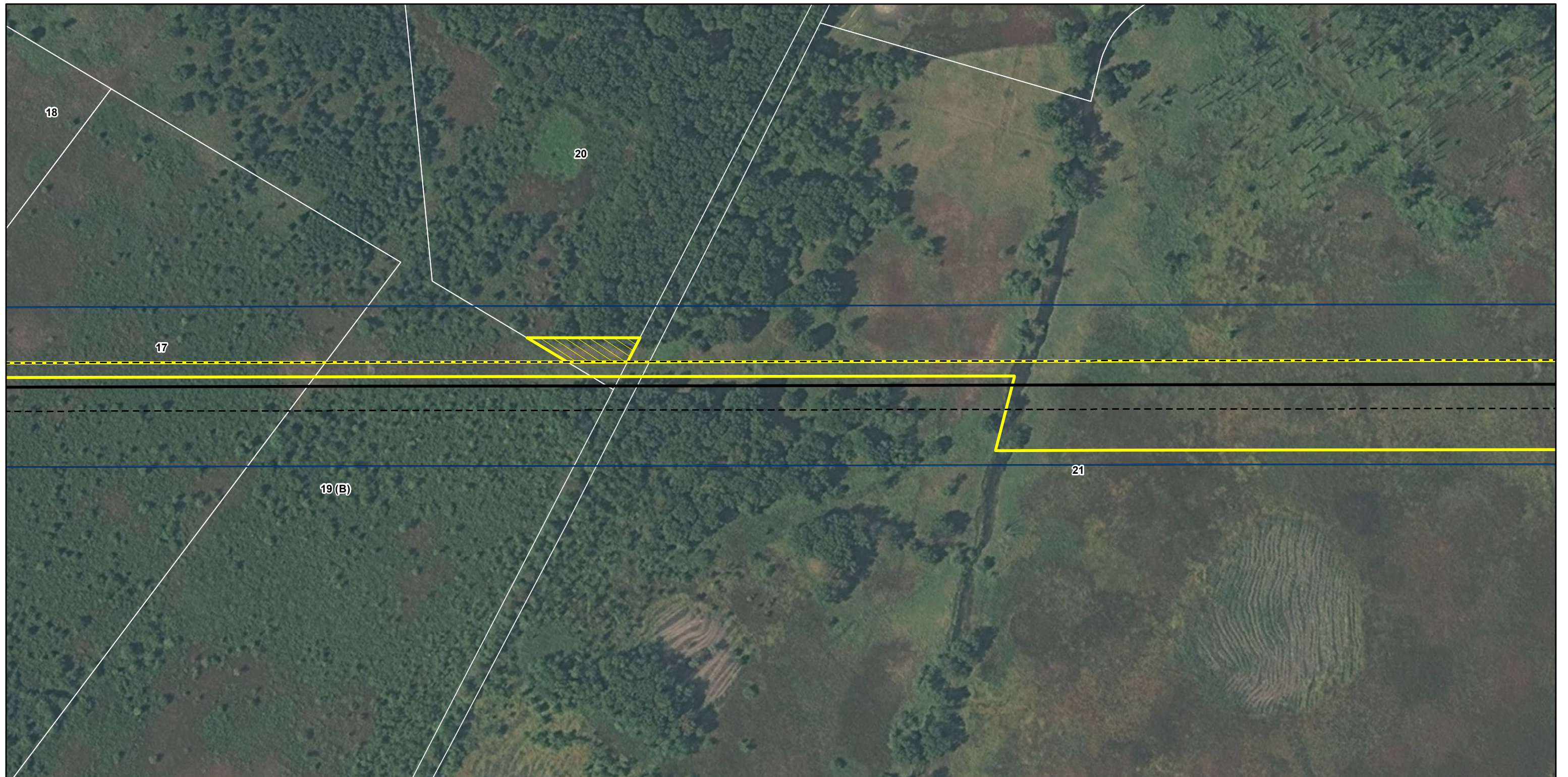


Montville - Whippany 230 kV Reinforcement Project
 Constructability

Jersey Central Power & Light
 A FirstEnergy Company

wsp

0 100 200 400 Feet



- ▲ Substation
- ▭ Township Boundary
- ▭ Parcel Boundary
- Existing Transmission**
- < 115 kV
- 230 kV
- 500 kV

- ▭ JCP&L ROW
- ▨ Tree Trimming Rights
- Proposed Route
- - - Proposed Route ROW
- ▭ Priority Tree Rights Limit

Page 5 of 16

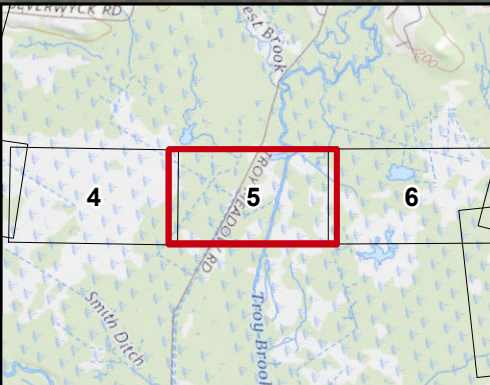
Priority Tree Rights Limit - Important Note
 JCPL'S vegetation management program includes the evaluation and mitigation of Priority Trees located adjacent to the right-of-way. Priority Tree Rights are sought in locations where JCPL uses a targeted and selective approach to evaluate and control trees that are dead, dying, diseased, structurally defective, leaning or significantly encroaching where the operation of the transmission line could be impacted should the tree, or portion of the tree, fail or grow towards it.

As depicted, the Priority Tree Right Limit is a general boundary utilizing a fixed distance of 165 feet from the proposed centerline of the transmission line where evaluation and control of potential Priority Trees may occur. The Priority Tree Right will not encumber areas on which residential homes or commercial buildings are located. Other structures, existing either now or in the future, are permitted within the encumbered area.

Sources:
 Parcels (Morris County, NJ, 2018)
 Imagery (ESRI 2019)

Coordinate System:
 New Jersey State Plane
 NAD 1983

May 7, 2019

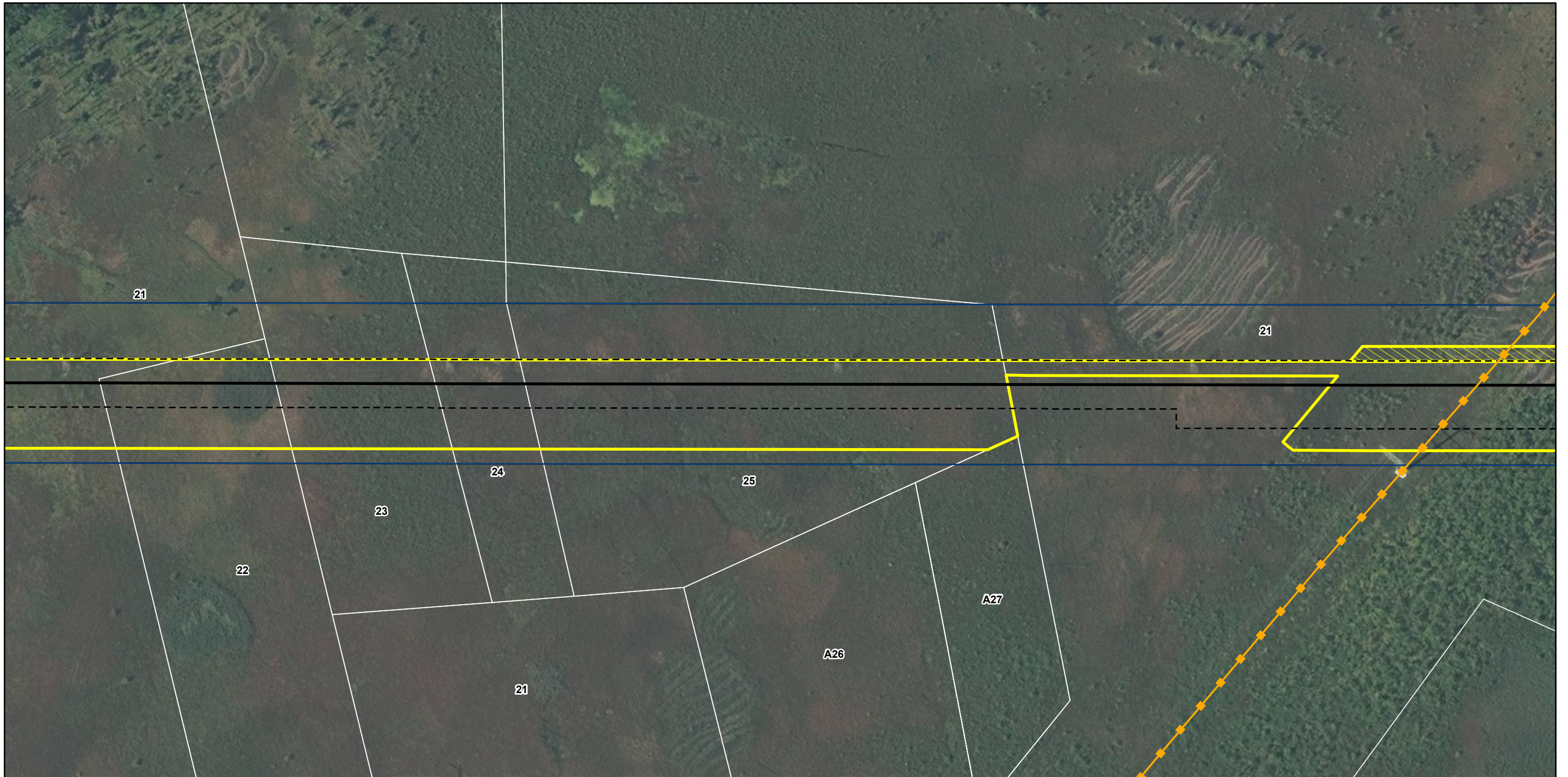


Montville - Whippany 230 kV Reinforcement Project
 Constructability

Jersey Central Power & Light
 A FirstEnergy Company

wsp

0 100 200 400 Feet



▲ Substation
▭ Township Boundary
▭ Parcel Boundary
Existing Transmission
 < 115 kV
 230 kV
 500 kV

JCP&L ROW
 Tree Trimming Rights
 Proposed Route
 Proposed Route ROW
 Priority Tree Rights Limit

Page 6 of 16

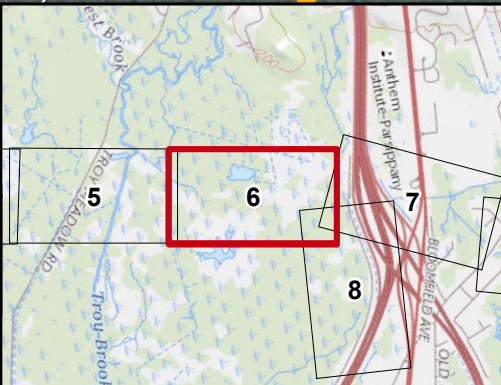
Priority Tree Rights Limit - Important Note
JCPL'S vegetation management program includes the evaluation and mitigation of Priority Trees located adjacent to the right-of-way. Priority Tree Rights are sought in locations where JCPL uses a targeted and selective approach to evaluate and control trees that are dead, dying, diseased, structurally defective, leaning or significantly encroaching where the operation of the transmission line could be impacted should the tree, or portion of the tree, fail or grow towards it.

As depicted, the Priority Tree Right Limit is a general boundary utilizing a fixed distance of 165 feet from the proposed centerline of the transmission line where evaluation and control of potential Priority Trees may occur. The Priority Tree Right will not encumber areas on which residential homes or commercial buildings are located. Other structures, existing either now or in the future, are permitted within the encumbered area.

Sources:
 Parcels (Morris County, NJ, 2018)
 Imagery (ESRI 2019)

Coordinate System:
 New Jersey State Plane
 NAD 1983

May 7, 2019



Montville - Whippany 230 kV Reinforcement Project
Constructability

A FirstEnergy Company

0 100 200 400 Feet



▲ Substation

▭ Township Boundary

▭ Parcel Boundary

Existing Transmission

— < 115 kV

● 230 kV

■ 500 kV

▨ JCP&L ROW

▨ Tree Trimming Rights

— Proposed Route

- - - Proposed Route ROW

▭ Priority Tree Rights Limit

Page 7 of 16

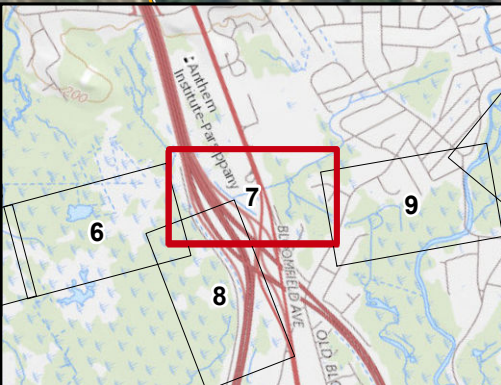
Priority Tree Rights Limit - Important Note
 JCPL'S vegetation management program includes the evaluation and mitigation of Priority Trees located adjacent to the right-of-way. Priority Tree Rights are sought in locations where JCPL uses a targeted and selective approach to evaluate and control trees that are dead, dying, diseased, structurally defective, leaning or significantly encroaching where the operation of the transmission line could be impacted should the tree, or portion of the tree, fail or grow towards it.

As depicted, the Priority Tree Right Limit is a general boundary utilizing a fixed distance of 165 feet from the proposed centerline of the transmission line where evaluation and control of potential Priority Trees may occur. The Priority Tree Right will not encumber areas on which residential homes or commercial buildings are located. Other structures, existing either now or in the future, are permitted within the encumbered area.

Sources:
 Parcels (Morris County, NJ, 2018)
 Imagery (ESRI 2019)

Coordinate System:
 New Jersey State Plane
 NAD 1983

May 7, 2019



**Montville - Whippany 230 kV
 Reinforcement Project
 Constructability**

**Jersey Central
 Power & Light**
 A FirstEnergy Company

wsp

0 100 200 400
 Feet



- ▲ Substation
- ▭ Township Boundary
- ▭ Parcel Boundary
- Existing Transmission**
- < 115 kV
- 230 kV
- 500 kV

- ▭ JCP&L ROW
- ▨ Tree Trimming Rights
- Proposed Route
- - - Proposed Route ROW
- ▭ Priority Tree Rights Limit

Page 8 of 16

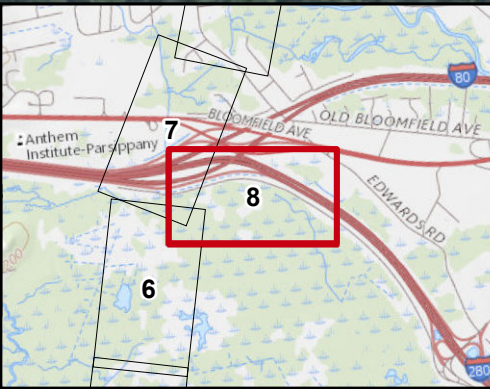
Priority Tree Rights Limit - Important Note
 JCPL'S vegetation management program includes the evaluation and mitigation of Priority Trees located adjacent to the right-of-way. Priority Tree Rights are sought in locations where JCPL uses a targeted and selective approach to evaluate and control trees that are dead, dying, diseased, structurally defective, leaning or significantly encroaching where the operation of the transmission line could be impacted should the tree, or portion of the tree, fail or grow towards it.

As depicted, the Priority Tree Right Limit is a general boundary utilizing a fixed distance of 165 feet from the proposed centerline of the transmission line where evaluation and control of potential Priority Trees may occur. The Priority Tree Right will not encumber areas on which residential homes or commercial buildings are located. Other structures, existing either now or in the future, are permitted within the encumbered area.



Sources:
 Parcels (Morris County, NJ, 2018)
 Imagery (ESRI 2019)


Coordinate System:
 New Jersey State Plane
 NAD 1983

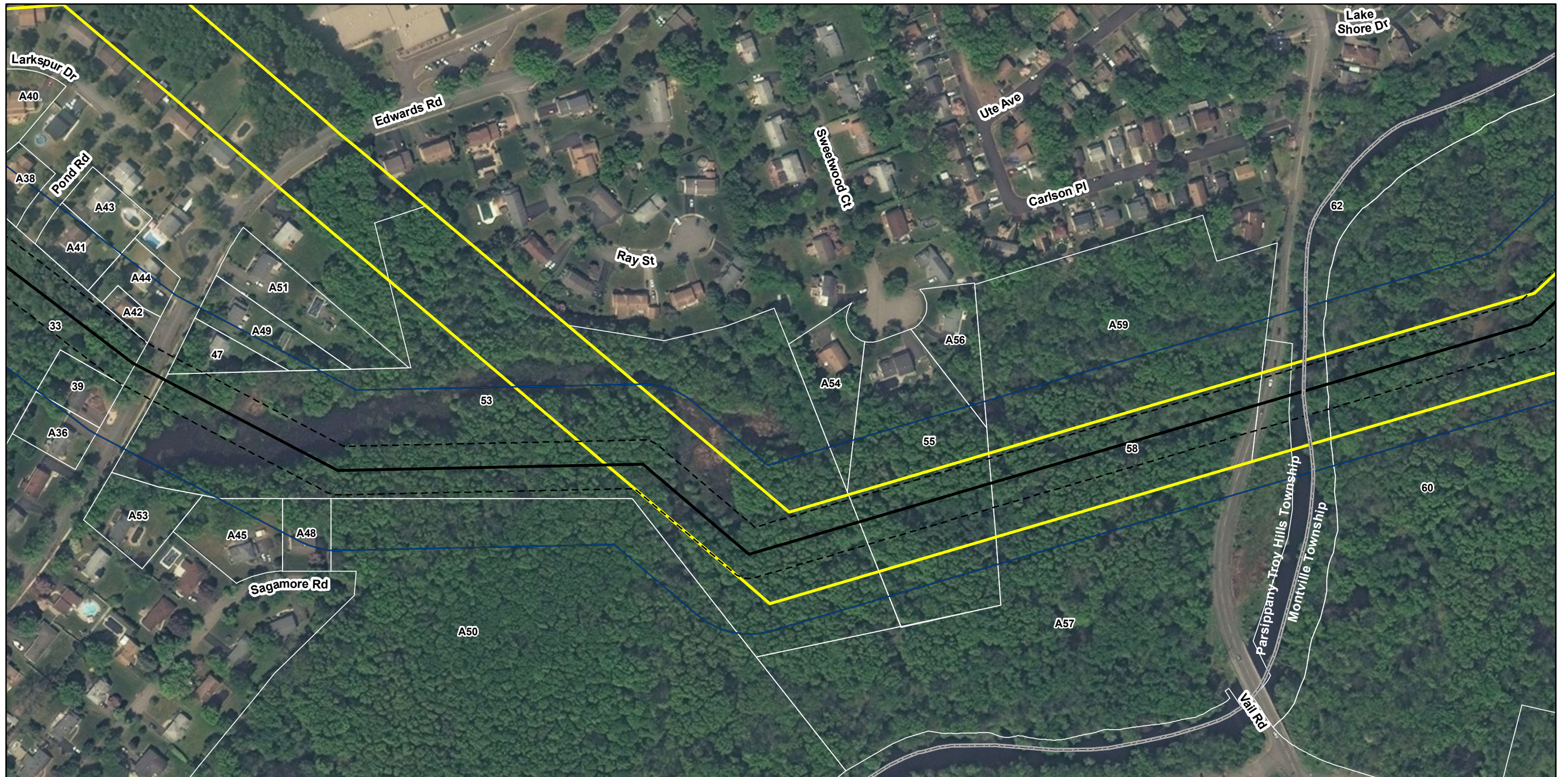
May 7, 2019



Montville - Whippany 230 kV Reinforcement Project
 Constructability


0 100 200 400
Feet



▲ Substation

▭ Township Boundary

▭ Parcel Boundary

Existing Transmission

— < 115 kV

● 230 kV

■ 500 kV

▭ JCP&L ROW

▨ Tree Trimming Rights

— Proposed Route

- - - Proposed Route ROW

▭ Priority Tree Rights Limit

Page 9 of 16

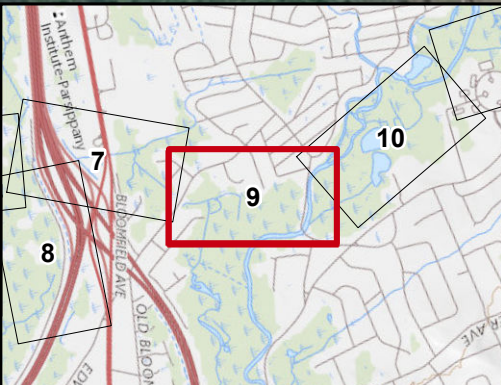
Priority Tree Rights Limit - Important Note
 JCPL'S vegetation management program includes the evaluation and mitigation of Priority Trees located adjacent to the right-of-way. Priority Tree Rights are sought in locations where JCPL uses a targeted and selective approach to evaluate and control trees that are dead, dying, diseased, structurally defective, leaning or significantly encroaching where the operation of the transmission line could be impacted should the tree, or portion of the tree, fail or grow towards it.

As depicted, the Priority Tree Right Limit is a general boundary utilizing a fixed distance of 165 feet from the proposed centerline of the transmission line where evaluation and control of potential Priority Trees may occur. The Priority Tree Right will not encumber areas on which residential homes or commercial buildings are located. Other structures, existing either now or in the future, are permitted within the encumbered area.

Sources:
 Parcels (Morris County, NJ, 2018)
 Imagery (ESRI 2019)

Coordinate System:
 New Jersey State Plane
 NAD 1983

May 7, 2019

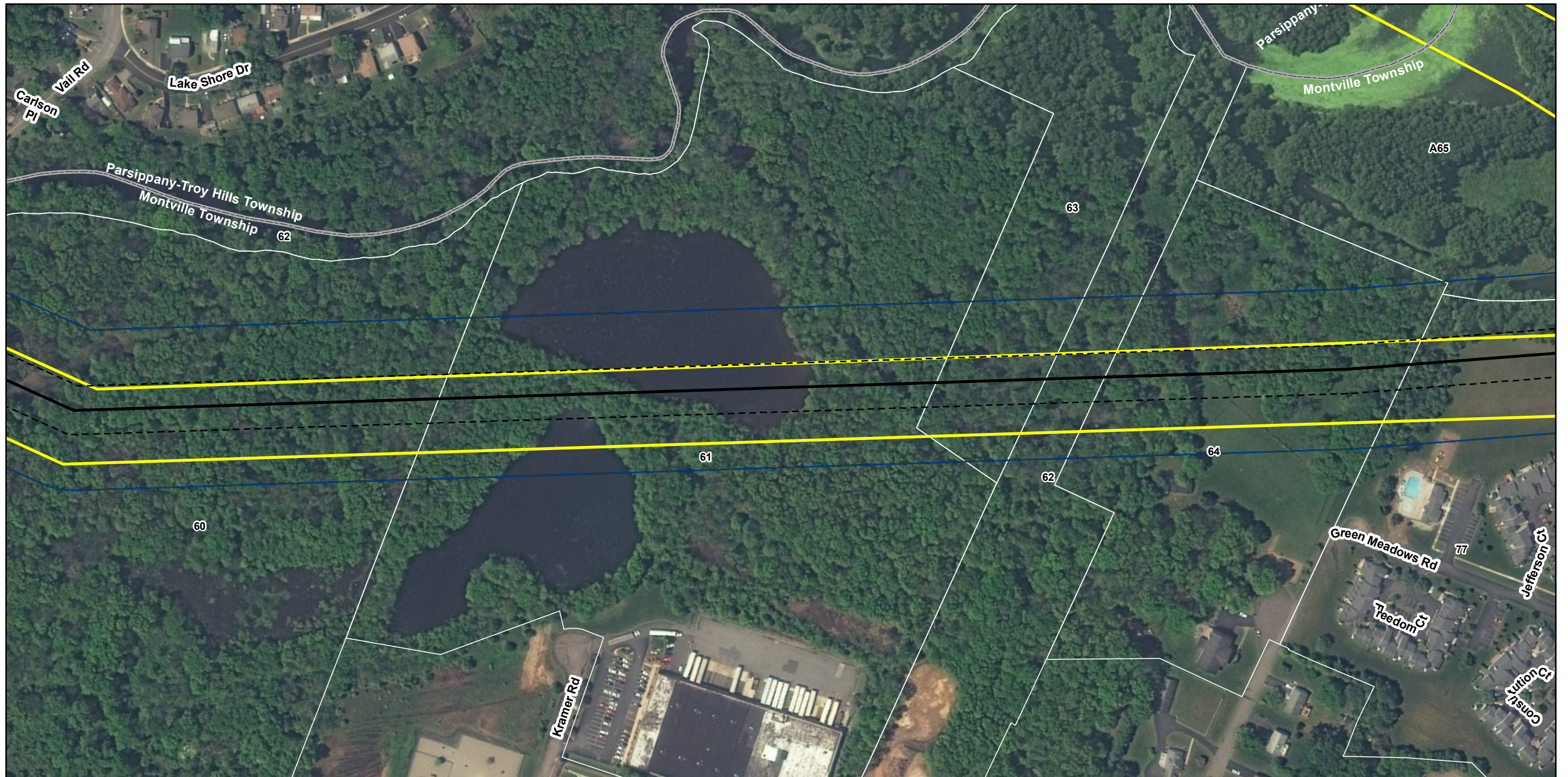


Montville - Whippany 230 kV Reinforcement Project
 Constructability

Jersey Central Power & Light
 A FirstEnergy Company

wsp

0 100 200 400 Feet



▲ Substation

▭ Township Boundary

▭ Parcel Boundary

Existing Transmission

— < 115 kV

— 230 kV

— 500 kV

▭ JCP&L ROW

▨ Tree Trimming Rights

— Proposed Route

▭ Proposed Route ROW

▭ Priority Tree Rights Limit

Page 10 of 16

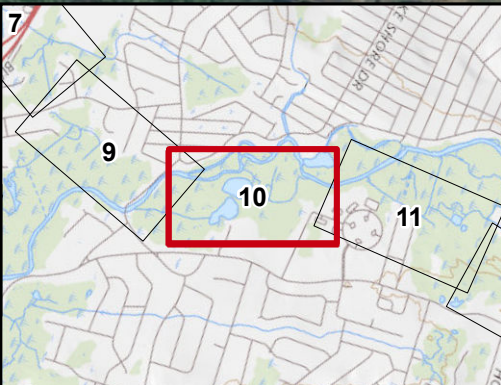
Priority Tree Rights Limit - Important Note
 JCPL'S vegetation management program includes the evaluation and mitigation of Priority Trees located adjacent to the right-of-way. Priority Tree Rights are sought in locations where JCPL uses a targeted and selective approach to evaluate and control trees that are dead, dying, diseased, structurally defective, leaning or significantly encroaching where the operation of the transmission line could be impacted should the tree, or portion of the tree, fail or grow towards it.

As depicted, the Priority Tree Right Limit is a general boundary utilizing a fixed distance of 165 feet from the proposed centerline of the transmission line where evaluation and control of potential Priority Trees may occur. The Priority Tree Right will not encumber areas on which residential homes or commercial buildings are located. Other structures, existing either now or in the future, are permitted within the encumbered area.

Sources:
 Parcels (Morris County, NJ, 2018)
 Imagery (ESRI 2019)

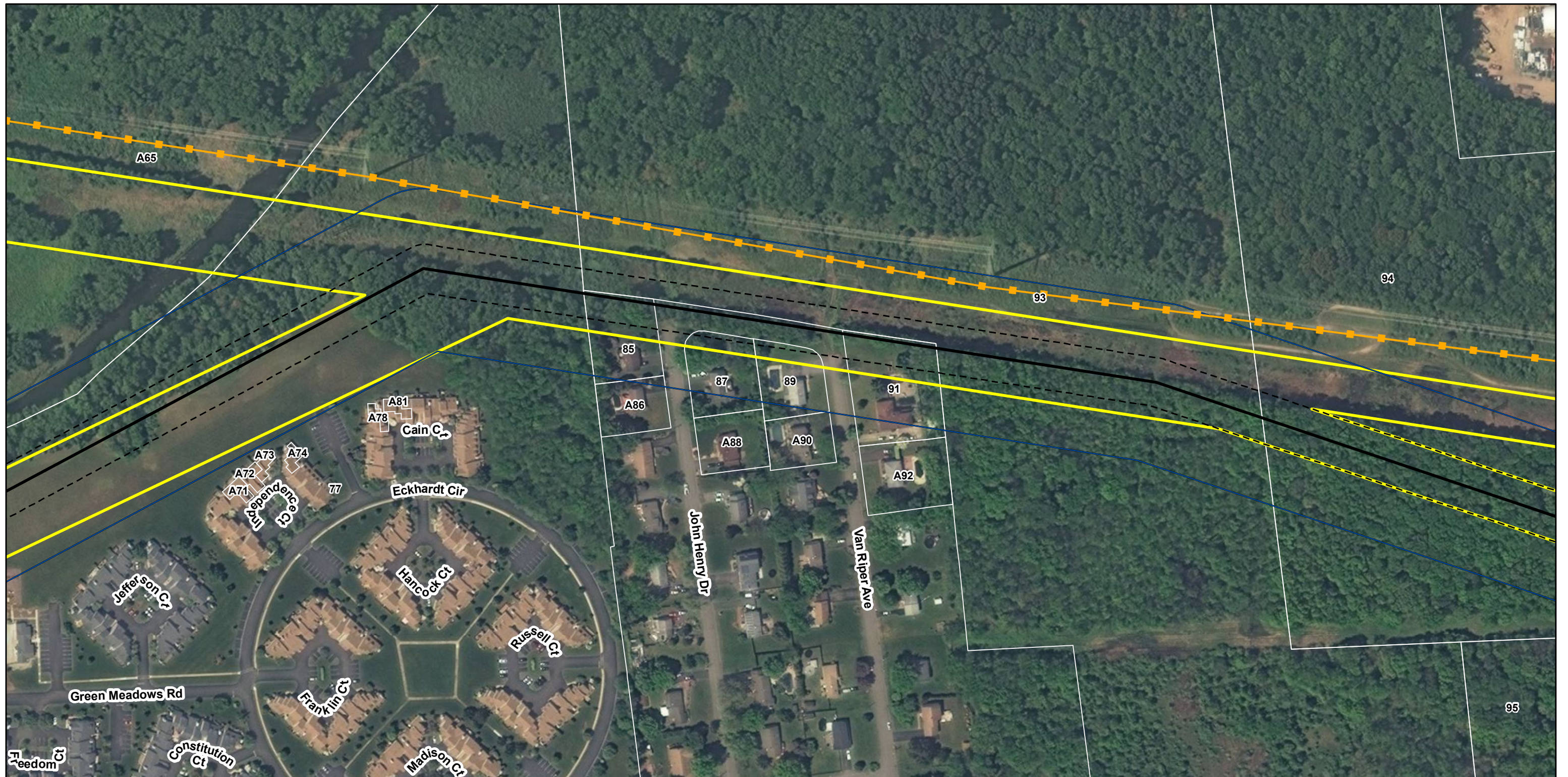
Coordinate System:
 New Jersey State Plane
 NAD 1983

May 7, 2019



**Montville - Whippany 230 kV
 Reinforcement Project
 Constructability**

A FirstEnergy Company



▲ Substation
▭ Township Boundary
▭ Parcel Boundary

Existing Transmission
 — < 115 kV
 ● 230 kV
 ■ 500 kV

JCP&L ROW
 ■ Tree Trimming Rights
 — Proposed Route
 - - - Proposed Route ROW
 ■ Priority Tree Rights Limit

Page 11 of 16

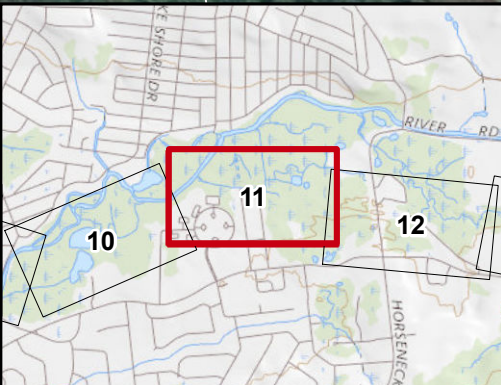
Priority Tree Rights Limit - Important Note
 JCPL'S vegetation management program includes the evaluation and mitigation of Priority Trees located adjacent to the right-of-way. Priority Tree Rights are sought in locations where JCPL uses a targeted and selective approach to evaluate and control trees that are dead, dying, diseased, structurally defective, leaning or significantly encroaching where the operation of the transmission line could be impacted should the tree, or portion of the tree, fail or grow towards it.

As depicted, the Priority Tree Right Limit is a general boundary utilizing a fixed distance of 165 feet from the proposed centerline of the transmission line where evaluation and control of potential Priority Trees may occur. The Priority Tree Right will not encumber areas on which residential homes or commercial buildings are located. Other structures, existing either now or in the future, are permitted within the encumbered area.

Sources:
 Parcels (Morris County, NJ, 2018)
 Imagery (ESRI 2019)

Coordinate System:
 New Jersey State Plane
 NAD 1983

May 7, 2019

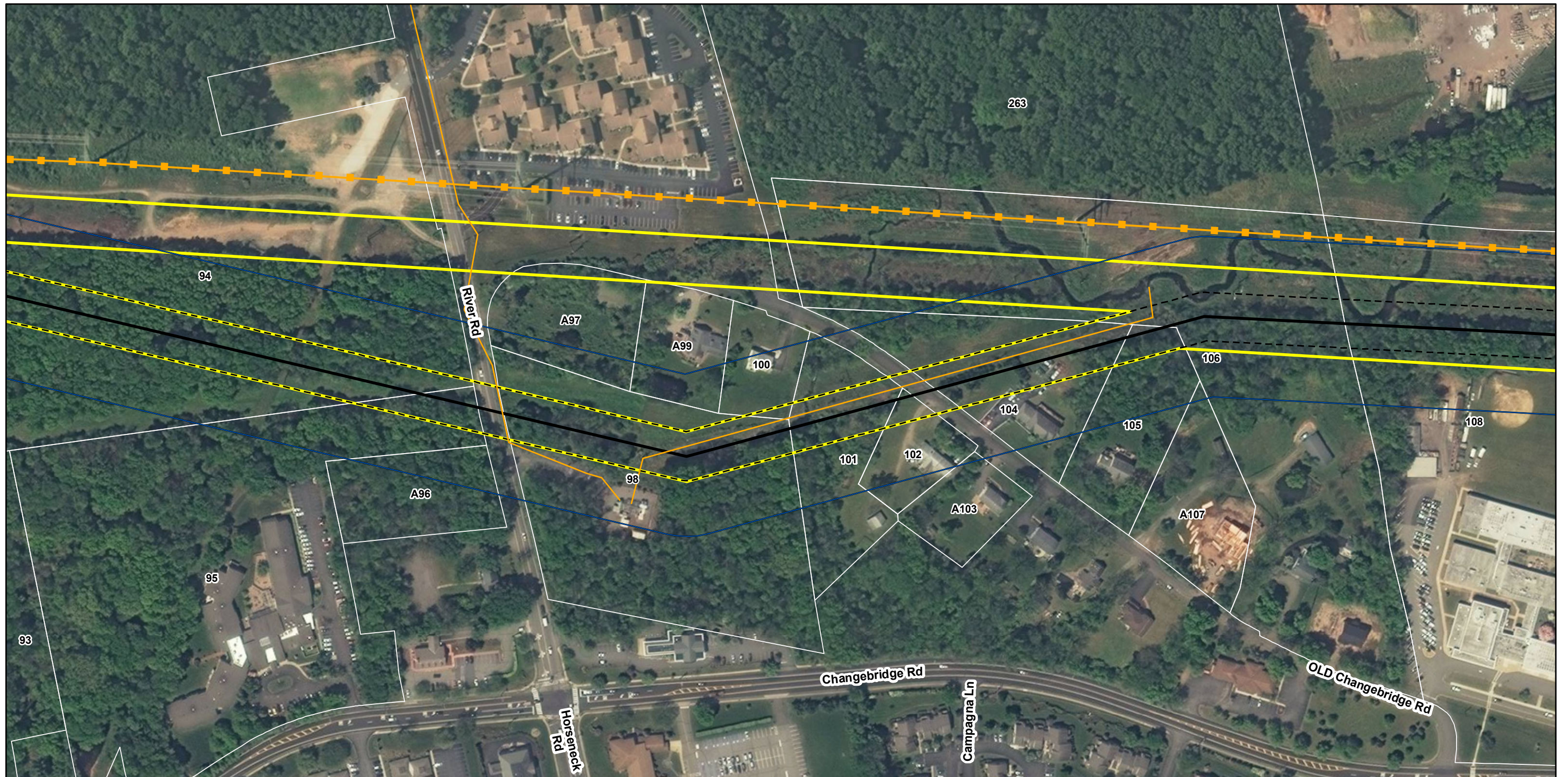


Montville - Whippany 230 kV Reinforcement Project
Constructability

Jersey Central Power & Light
 A FirstEnergy Company

wsp

0 100 200 400 Feet



▲ Substation

▭ Township Boundary

▭ Parcel Boundary

Existing Transmission

— < 115 kV

— 230 kV

— 500 kV

▭ JCP&L ROW

▨ Tree Trimming Rights

— Proposed Route

▭ Proposed Route ROW

▭ Priority Tree Rights Limit

Page 12 of 16

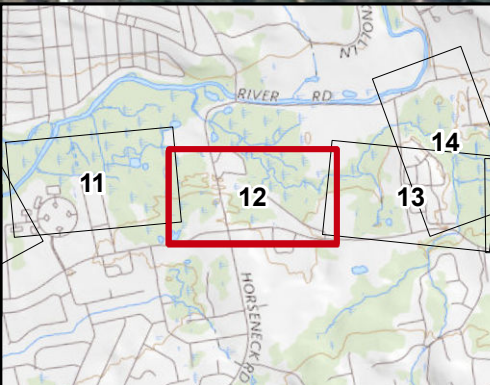
Priority Tree Rights Limit - Important Note
 JCPL'S vegetation management program includes the evaluation and mitigation of Priority Trees located adjacent to the right-of-way. Priority Tree Rights are sought in locations where JCPL uses a targeted and selective approach to evaluate and control trees that are dead, dying, diseased, structurally defective, leaning or significantly encroaching where the operation of the transmission line could be impacted should the tree, or portion of the tree, fail or grow towards it.

As depicted, the Priority Tree Right Limit is a general boundary utilizing a fixed distance of 165 feet from the proposed centerline of the transmission line where evaluation and control of potential Priority Trees may occur. The Priority Tree Right will not encumber areas on which residential homes or commercial buildings are located. Other structures, existing either now or in the future, are permitted within the encumbered area.

Sources:
 Parcels (Morris County, NJ, 2018)
 Imagery (ESRI 2019)

Coordinate System:
 New Jersey State Plane
 NAD 1983

May 7, 2019

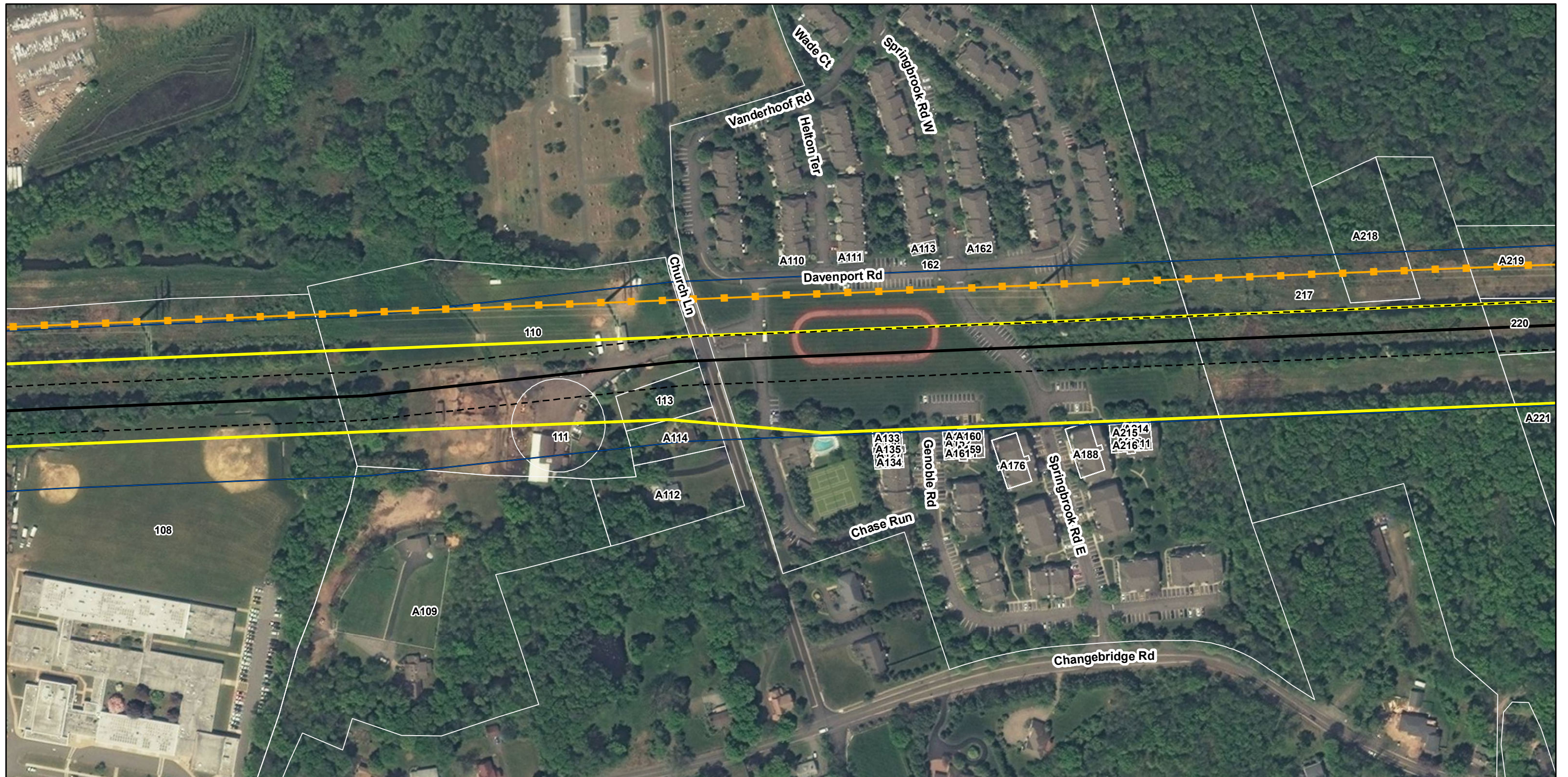


**Montville - Whippany 230 kV
 Reinforcement Project
 Constructability**

**Jersey Central
 Power & Light**
 A FirstEnergy Company

wsp

0 100 200 400
 Feet



▲ Substation

▭ Township Boundary

▭ Parcel Boundary

Existing Transmission

— < 115 kV

— 230 kV

— 500 kV

▭ JCP&L ROW

▨ Tree Trimming Rights

— Proposed Route

▭ Proposed Route ROW

▭ Priority Tree Rights Limit

Page 13 of 16

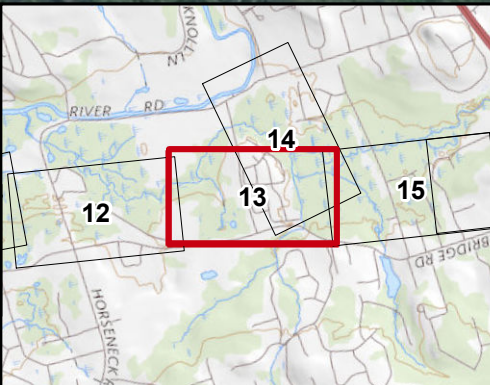
Priority Tree Rights Limit - Important Note
 JCPL'S vegetation management program includes the evaluation and mitigation of Priority Trees located adjacent to the right-of-way. Priority Tree Rights are sought in locations where JCPL uses a targeted and selective approach to evaluate and control trees that are dead, dying, diseased, structurally defective, leaning or significantly encroaching where the operation of the transmission line could be impacted should the tree, or portion of the tree, fail or grow towards it.

As depicted, the Priority Tree Right Limit is a general boundary utilizing a fixed distance of 165 feet from the proposed centerline of the transmission line where evaluation and control of potential Priority Trees may occur. The Priority Tree Right will not encumber areas on which residential homes or commercial buildings are located. Other structures, existing either now or in the future, are permitted within the encumbered area.

Sources:
 Parcels (Morris County, NJ, 2018)
 Imagery (ESRI 2019)

Coordinate System:
 New Jersey State Plane
 NAD 1983

May 7, 2019



Montville - Whippany 230 kV Reinforcement Project
 Constructability

Jersey Central Power & Light
 A FirstEnergy Company

WSP

0 100 200 400 Feet



▲ Substation

▭ Township Boundary

▭ Parcel Boundary

Existing Transmission

— < 115 kV

— 230 kV

— 500 kV

JCP&L ROW

Tree Trimming Rights

Proposed Route

Proposed Route ROW

Priority Tree Rights Limit

Page 14 of 16

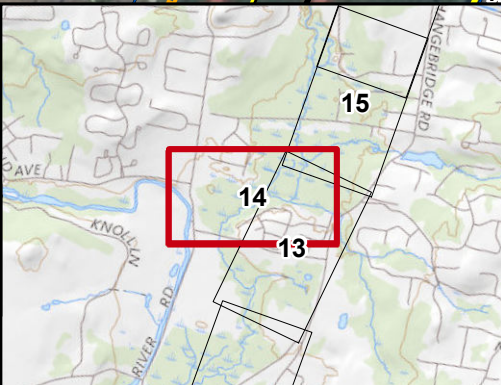
Priority Tree Rights Limit - Important Note
 JCPL'S vegetation management program includes the evaluation and mitigation of Priority Trees located adjacent to the right-of-way. Priority Tree Rights are sought in locations where JCPL uses a targeted and selective approach to evaluate and control trees that are dead, dying, diseased, structurally defective, leaning or significantly encroaching where the operation of the transmission line could be impacted should the tree, or portion of the tree, fail or grow towards it.

As depicted, the Priority Tree Right Limit is a general boundary utilizing a fixed distance of 165 feet from the proposed centerline of the transmission line where evaluation and control of potential Priority Trees may occur. The Priority Tree Right will not encumber areas on which residential homes or commercial buildings are located. Other structures, existing either now or in the future, are permitted within the encumbered area.

Sources:
 Parcels (Morris County, NJ, 2018)
 Imagery (ESRI 2019)

Coordinate System:
 New Jersey State Plane
 NAD 1983

May 7, 2019

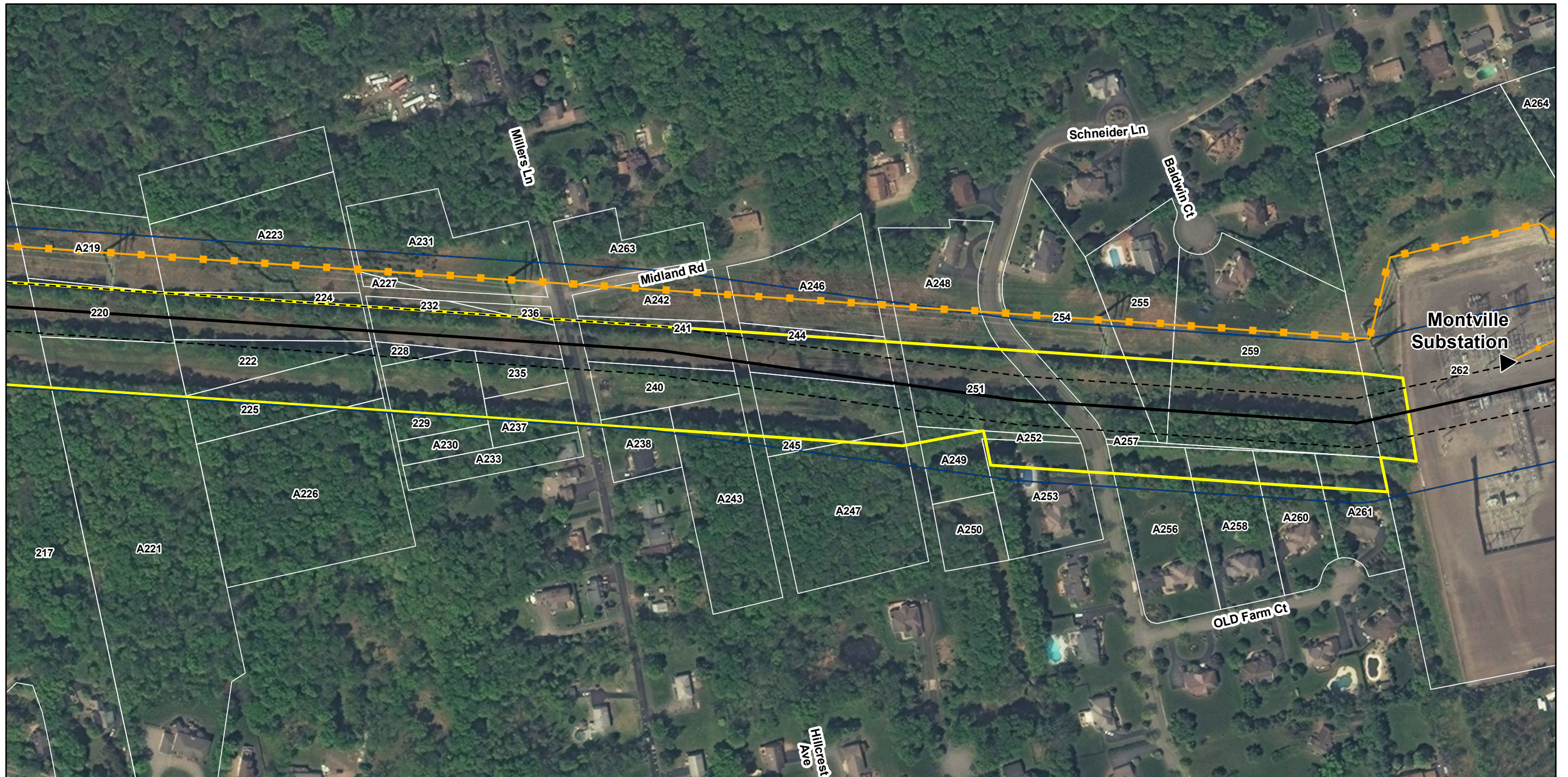


Montville - Whippany 230 kV Reinforcement Project
Constructability

Jersey Central Power & Light
 A FirstEnergy Company

wsp

0 100 200 400 Feet



▲ Substation

▭ Township Boundary

▭ Parcel Boundary

Existing Transmission

— < 115 kV

● 230 kV

■ 500 kV

▭ JCP&L ROW

▨ Tree Trimming Rights

— Proposed Route

- - - Proposed Route ROW

▭ Priority Tree Rights Limit

Page 15 of 16

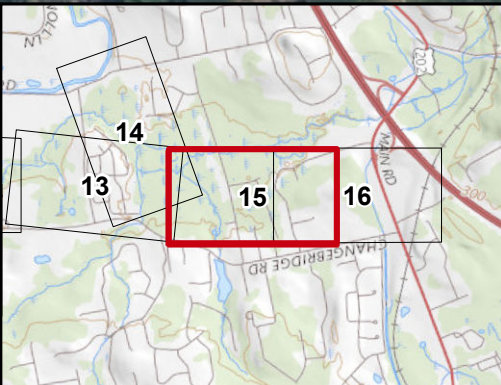
Priority Tree Rights Limit - Important Note
 JCPL'S vegetation management program includes the evaluation and mitigation of Priority Trees located adjacent to the right-of-way. Priority Tree Rights are sought in locations where JCPL uses a targeted and selective approach to evaluate and control trees that are dead, dying, diseased, structurally defective, leaning or significantly encroaching where the operation of the transmission line could be impacted should the tree, or portion of the tree, fail or grow towards it.

As depicted, the Priority Tree Right Limit is a general boundary utilizing a fixed distance of 165 feet from the proposed centerline of the transmission line where evaluation and control of potential Priority Trees may occur. The Priority Tree Right will not encumber areas on which residential homes or commercial buildings are located. Other structures, existing either now or in the future, are permitted within the encumbered area.

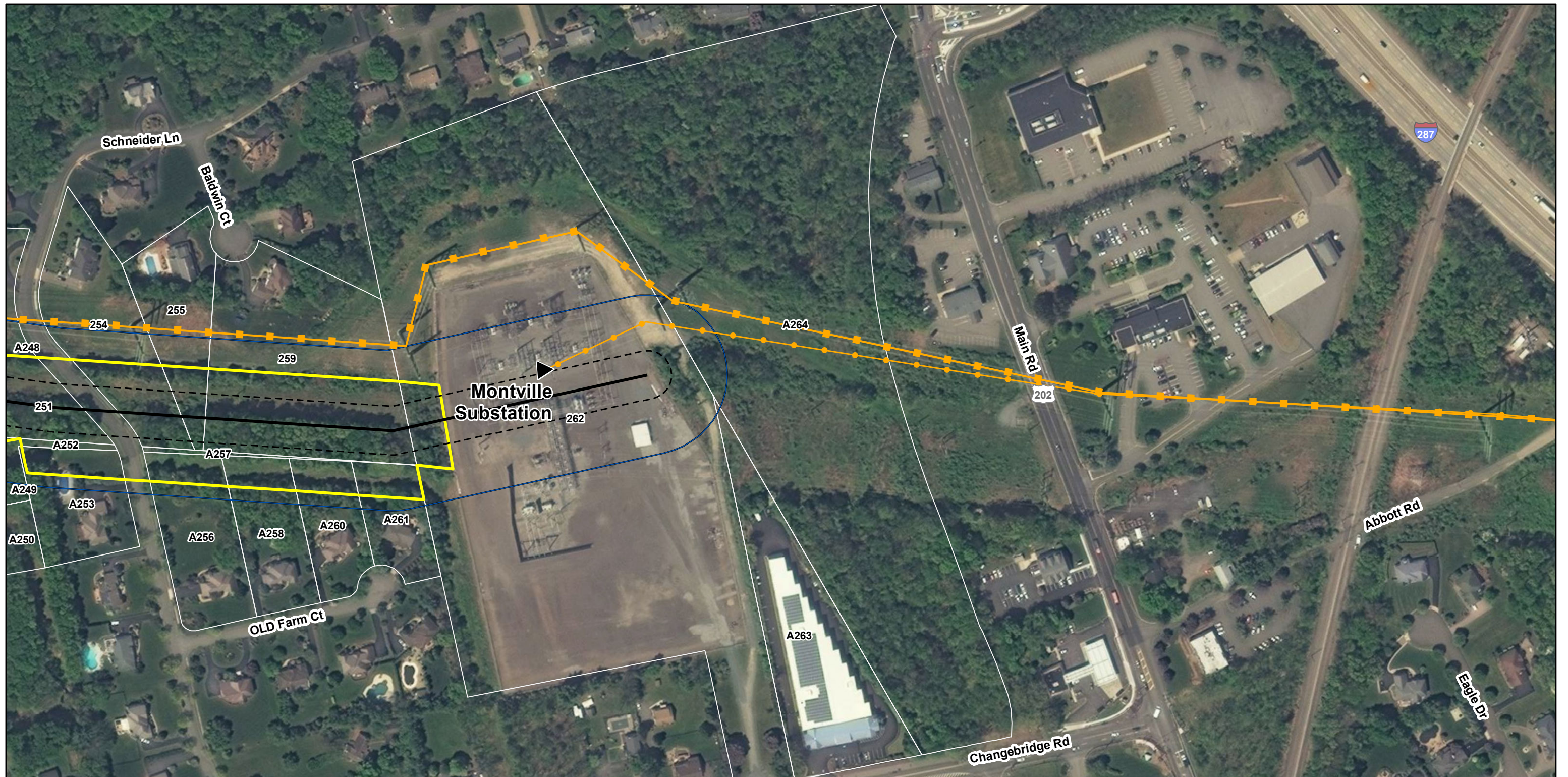
Sources:
 Parcels (Morris County, NJ, 2018)
 Imagery (ESRI 2019)

Coordinate System:
 New Jersey State Plane
 NAD 1983

May 7, 2019



**Montville - Whippany 230 kV
 Reinforcement Project
 Constructability**



▲ Substation
 □ Township Boundary
 □ Parcel Boundary

Existing Transmission

- < 115 kV
- 230 kV
- 500 kV

□ JCP&L ROW
 ▨ Tree Trimming Rights
 — Proposed Route
 - - - Proposed Route ROW
 □ Priority Tree Rights Limit

Page 16 of 16

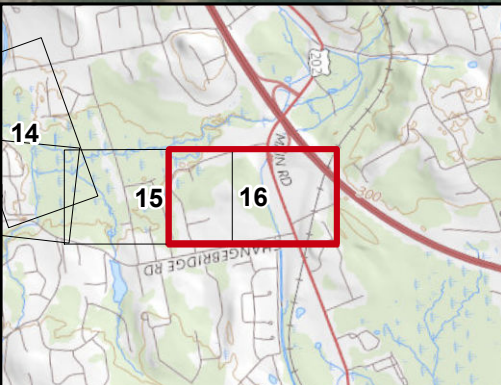
Priority Tree Rights Limit - Important Note
 JCPL'S vegetation management program includes the evaluation and mitigation of Priority Trees located adjacent to the right-of-way. Priority Tree Rights are sought in locations where JCPL uses a targeted and selective approach to evaluate and control trees that are dead, dying, diseased, structurally defective, leaning or significantly encroaching where the operation of the transmission line could be impacted should the tree, or portion of the tree, fail or grow towards it.

As depicted, the Priority Tree Right Limit is a general boundary utilizing a fixed distance of 165 feet from the proposed centerline of the transmission line where evaluation and control of potential Priority Trees may occur. The Priority Tree Right will not encumber areas on which residential homes or commercial buildings are located. Other structures, existing either now or in the future, are permitted within the encumbered area.

Sources:
 Parcels (Morris County, NJ, 2018)
 Imagery (ESRI 2019)

Coordinate System:
 New Jersey State Plane
 NAD 1983

May 7, 2019



**Montville - Whippany 230 kV
 Reinforcement Project
 Constructability**

**Jersey Central
 Power & Light**
 A FirstEnergy Company

WSP

0 100 200 400
 Feet