




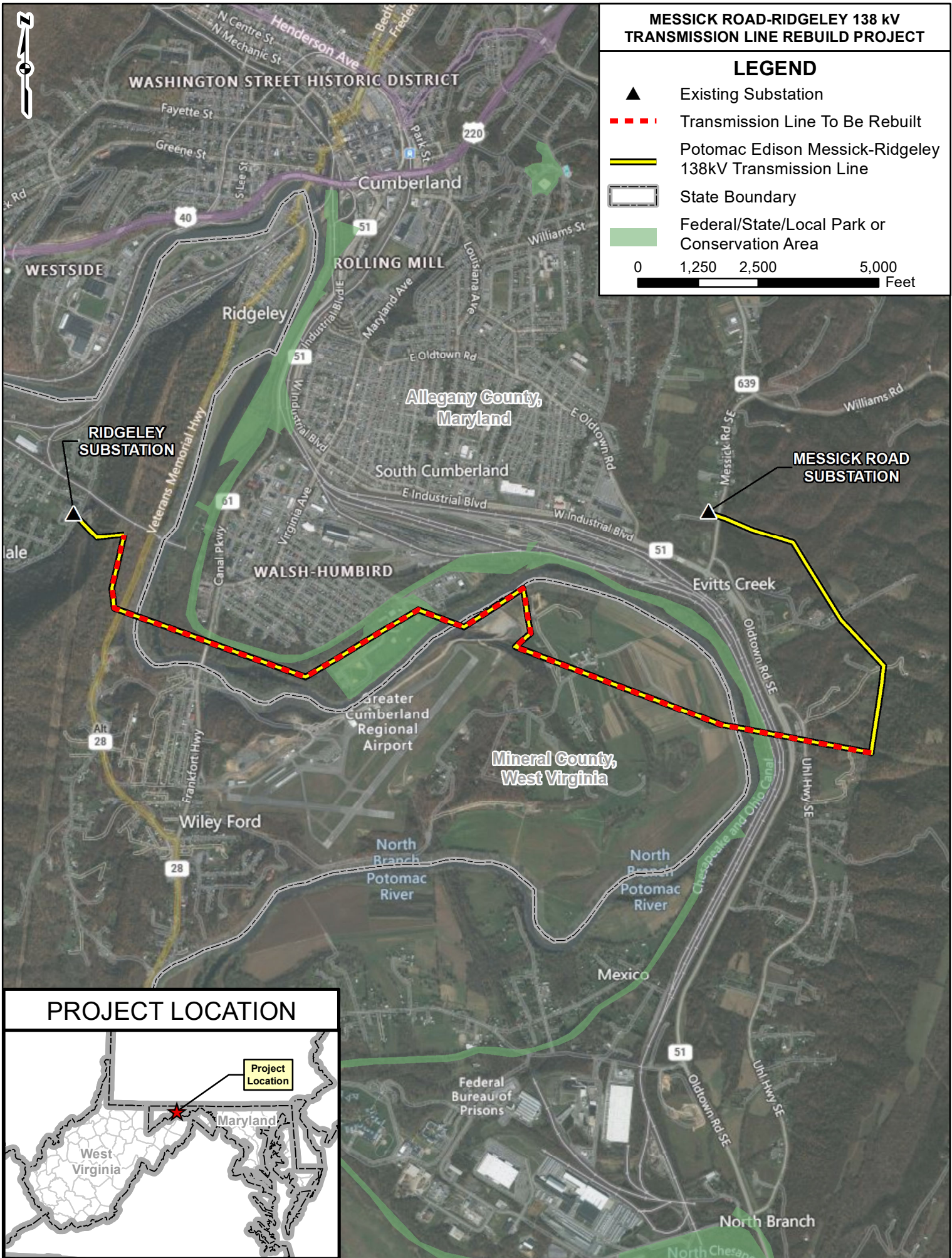


**MESSICK ROAD-RIDGELEY 138 KV
TRANSMISSION LINE REBUILD PROJECT**

LEGEND

-  Existing Substation
 -  Transmission Line To Be Rebuilt
 -  Potomac Edison Messick-Ridgeley 138kV Transmission Line
 -  State Boundary
 -  Federal/State/Local Park or Conservation Area
- 0 1,250 2,500 5,000 Feet



PROJECT LOCATION

