

5.545" x" 8.5



While electricity is a force that makes our lives better and more rewarding, it can also be dangerous if proper precautions are not taken. Each year, people are injured or killed by accidental contact with electrical equipment, contact that can be avoided if we all stop to think about our safety.

If you are unsure whether an activity poses a safety risk, you should:

**STOP.** Stop what you're doing to consider your personal safety before working or playing around power lines or electrical equipment.

**LOOK.** Look around for potential hazards and ways you might come into contact with electrical equipment and identify a way to avoid the hazard.

**LIVE.** Prevent serious injury or death by taking precautions to avoid accidental contact with electrical equipment. There is nothing more important than your safety.

5.67" x" 8.5

Back Cover



At FirstEnergy, safety is a core value that guides our actions in every activity to help support the health and well-being of our employees, customers and communities. Our 10 electric companies serve 6.1 million customers across six states, maintaining more than 300,000 miles of overhead electric wires and extensive electrical infrastructure under the ground. For our employees, the emphasis on safety is vital as they work with this energized equipment every day.

The "Stop. Look. Live." public safety campaign is designed to provide electrical safety education and awareness to help ensure you stay safe when working and living around electricity and electrical equipment.

For more information on FirstEnergy's commitment to safety and ways to keep safe around electrical equipment, visit [www.firstenergycorp.com/safety](http://www.firstenergycorp.com/safety)



The Illuminating<sup>®</sup> Company • Jersey Central<sup>®</sup> Power & Light • Met-Ed<sup>®</sup> • MonPower<sup>®</sup> • OhioEdison<sup>®</sup> Penelec<sup>®</sup> • PennPower<sup>®</sup> • PotomaEdison<sup>™</sup> • ToledoEdison<sup>®</sup> • WestPenn<sup>®</sup> Power

5.67" x" 8.5

Cover



# The Power of Safety

*Tips for staying safe around electricity.*

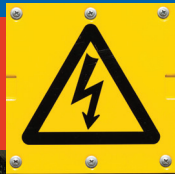


5.67" x" 8.5

5.67" x" 8.5

5.545" x" 8.5

## KEY TIPS FOR STAYING SAFE



Always assume power lines are energized and dangerous.



- Never touch a power line or anything touching a power line, whether the line is in the air, on the ground or hanging from a pole or other structure.
- Stay AT LEAST 30 FEET\* away from downed power lines that may have fallen due to stormy weather, broken trees or branches, car accidents or other reasons.
- If you see a downed line, CALL 911 to report it.



- Never go into a substation or near any equipment marked with "High Voltage" signage or other hazard warning.



- Keep clear of the green metal electrical boxes often found in yards and other areas with underground electric service. These contain energized equipment that could harm you.



- Never fly kites, drones or balloons near power lines. Do not climb or touch trees, fences or other items that are near power lines, as these items could be energized.

\*Keep at least 30 feet away from downed distribution lines, but stay at least 100 feet away from transmission lines.



Know what's below. Call 8-1-1 before you dig.

## WORKING OUTDOORS

Roofers, tree trimmers and other outdoor workers face higher risks of contact with overhead power lines and underground electrical infrastructure.

- Always identify locations of power lines and home service lines before beginning work.
- Call 8-1-1 at least three days before beginning a project that involves digging to have underground utility lines located and marked.
- Increase your awareness when using a ladder, pole saw, mobile equipment, or lifting items overhead. Plan your work and identify where electrical lines are located. Always maintain proper working distances from overhead lines\*\*.
- Take an extra moment to reassess the location of potential hazards before changing position on a job site.

\*\*For contractors required to follow OSHA regulations, please see [osha.gov](http://osha.gov) for specific requirements.

## IN AN EMERGENCY

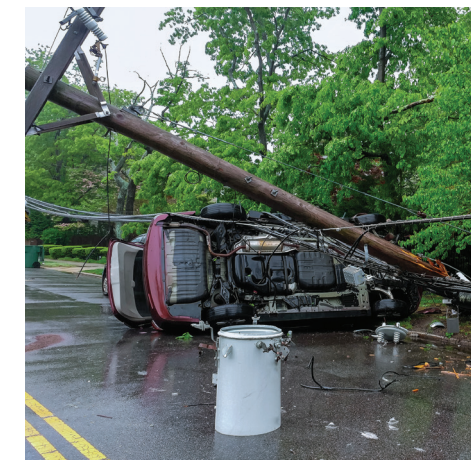
Knowledge of electrical hazards at the scene of accidents, fires or other disasters is vital to remaining safe in an emergency.

### Downed Power Lines



- Be especially aware around downed power lines, as electricity can be conducted up to 30 feet through pavement, roadways, sidewalks, trees and any other object it touches. Do not attempt to move downed power lines with any object, as it may conduct electricity. Call 911 to report it immediately.

### Vehicle Involvement



- If a vehicle strikes a utility pole, STAY INSIDE the vehicle until utility personnel give the all clear.
- If there is imminent danger from fire or other hazards, jump out and away from the vehicle without touching the vehicle and the ground at the same time. Be sure to land with both feet together and shuffle without lifting either foot off the ground until you are at least 30 feet away from the vehicle.